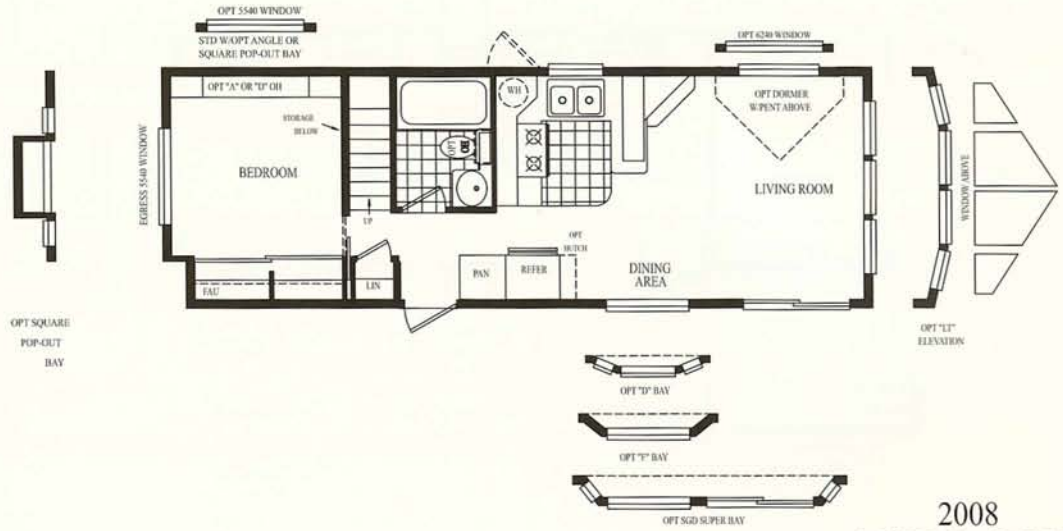
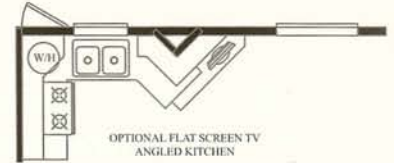
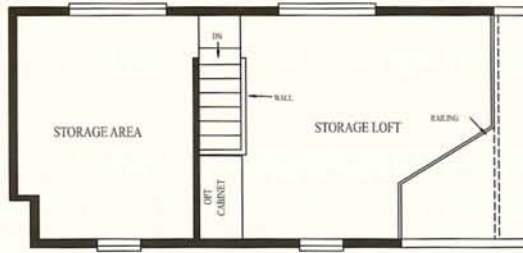
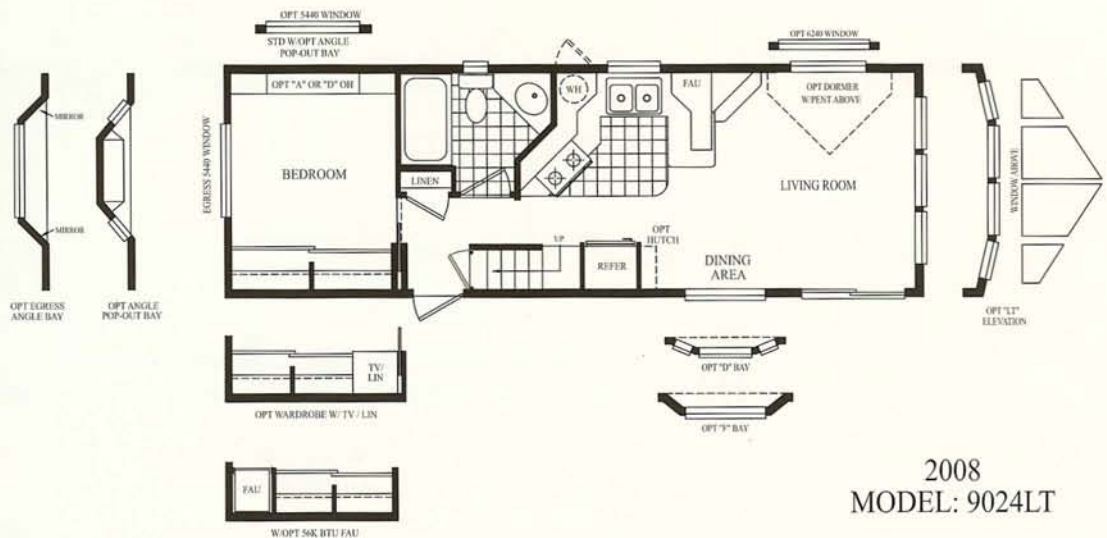
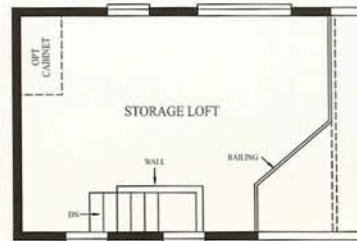


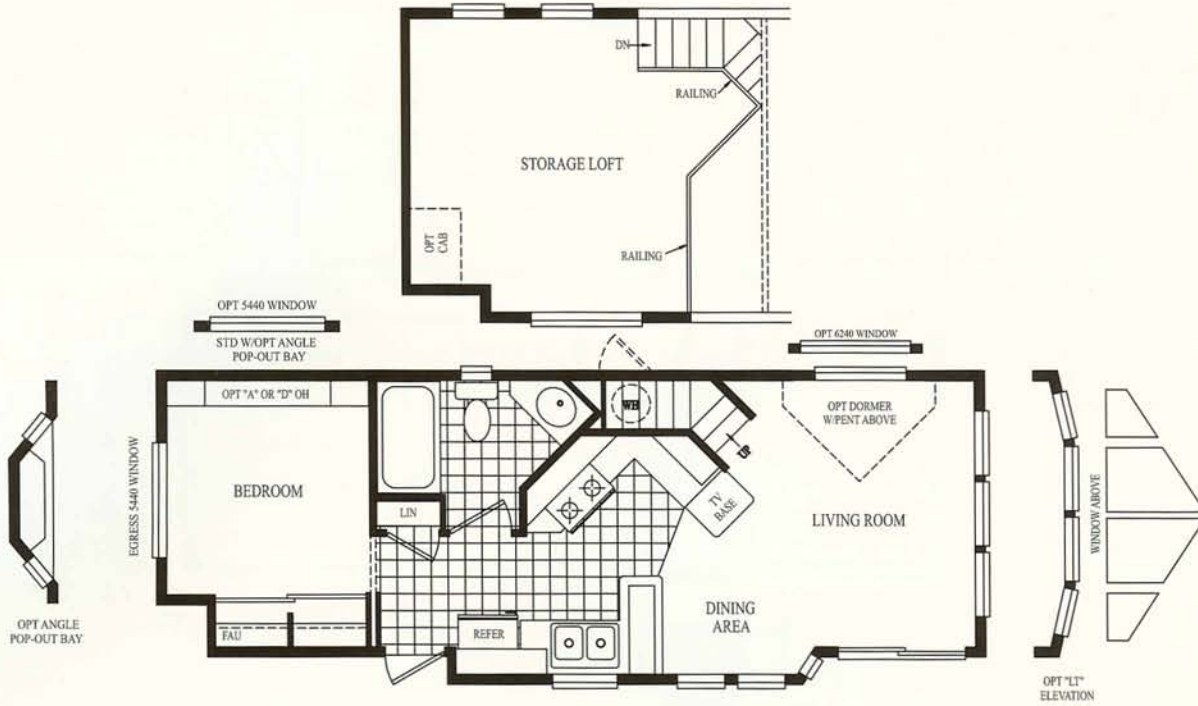
Park Model Lofts



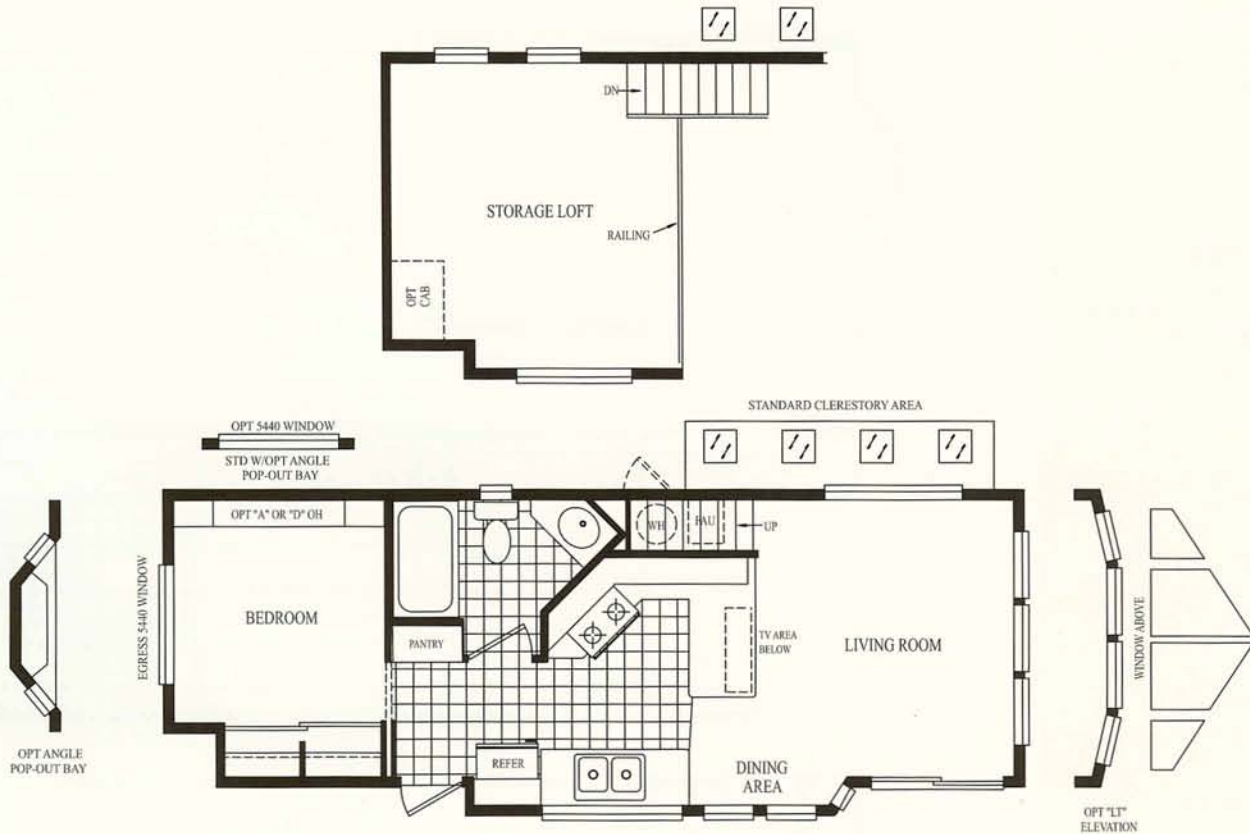
2008
MODEL: 9023LT



2008
MODEL: 9024LT

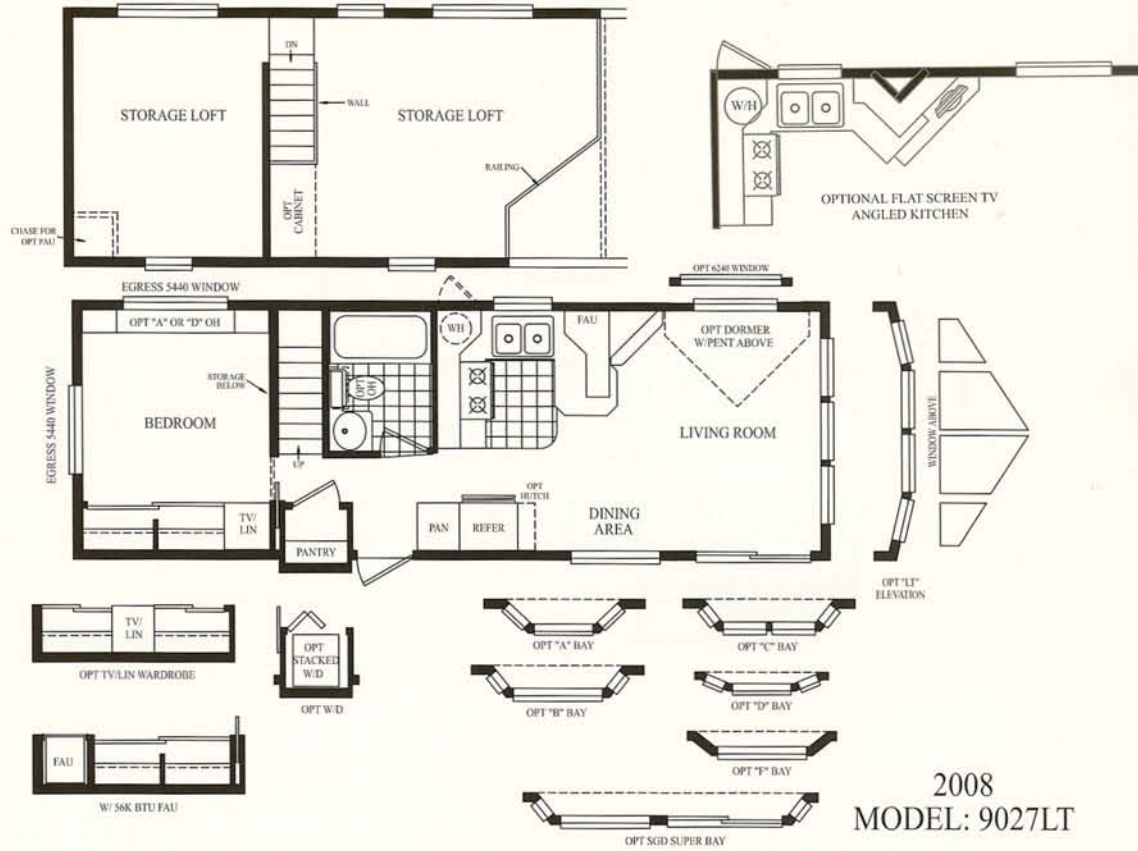


2008
MODEL: 9025LT

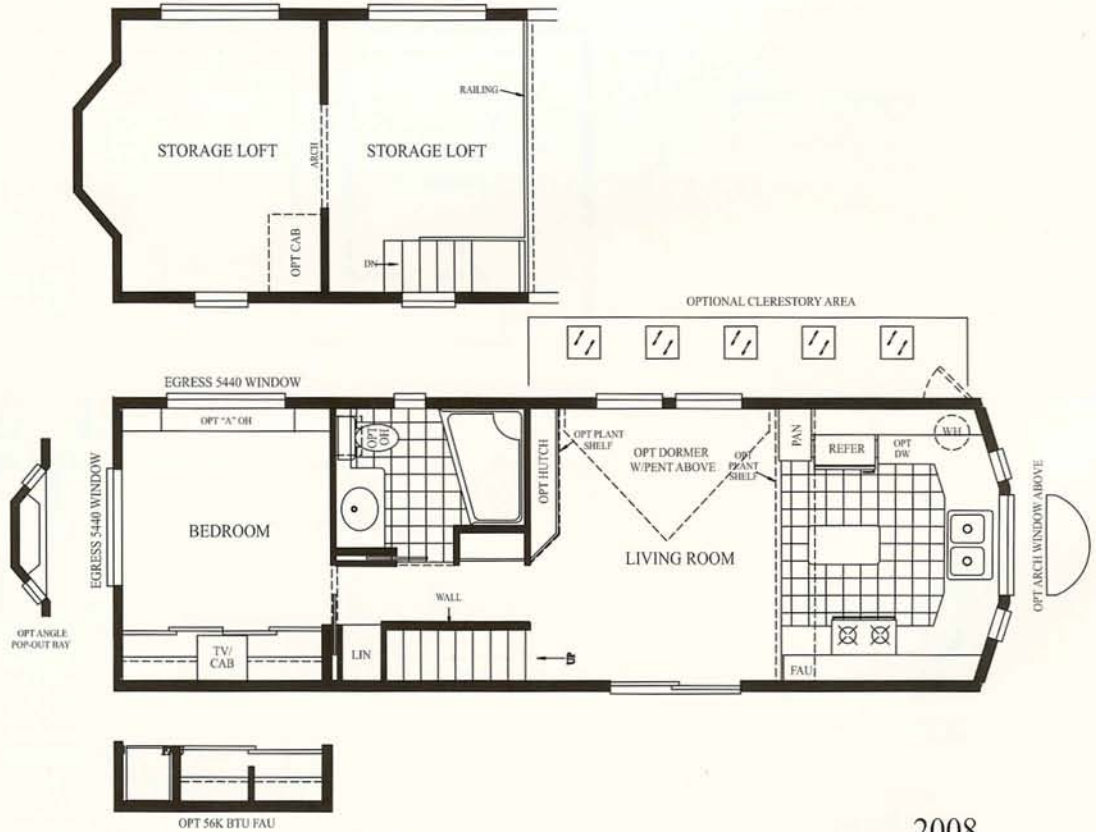


2008
MODEL: 9026LT

Park Model Lofts



2008
MODEL: 9027LT



2008
MODEL: 9028LT

Standard Features

INTERIOR

- Tape and texture throughout with rounded corners
- Cathedral ceilings throughout except loft area
- White interior passage and pocket doors with heavy duty hardware
- Drapes valances with mini blinds
- Shaw upgraded carpeting with padding and tack strip
- High grade "Congoleum" linoleum in kitchen and bathroom
- Upgrade lighting package
- Smoke detector
- Fire extinguisher
- LP Leak Gas Detector
- Heavy steel welded and powdered coated loft railing

KITCHEN

- General Electric 30" gas range
- General Electric 15.8 cu. ft. double door frost free refrigerator
- 30" range hood with exhaust fan and light
- Choice of cabinet woodgrains
- Upgraded raised panel cabinet doors
- Choice of upgraded cabinet pulls
- Drawers with double steel roller guides
- Laminate countertops throughout
- Satin finish single lever kitchen faucet with spray
- Extra large composite kitchen sink
- Concealed cabinet door hinges
- Matching woodgrain overhead cabinet interiors

BATHROOM

- Lasco fiberglass one piece tub/shower
- Satin finish single lever lavy faucet
- Satin finish single lever tub diverter with shower head
- Satin towel bar and tissue holder
- Safety mirror over lavy with 18" triple bulb satin light bar
- Marble bowl lavy sink

BEDROOM

- Full width wardrobe with sliding doors
- Single drawers below wardrobe
- Dresser with overhead cabinet (per floorplan)
- 54" x 40" egress window

EXTERIOR

- Architectural Shingled Roof
- Horizontal Cemplank Siding
- 9-light rear door with deadbolt
- White exterior lights at each door
- White framed dual glaze windows throughout
- White framed dual glaze sliding glass door
- Front, rear and side eaves
- Exterior GFI receptacle by sliding glass door

PLUMBING, ELECTRICAL, HEATING & INSULATION

- PEX waterlines with low point drain
- Residential style U.L. approved electrical devices throughout
- 50 amp exterior main panel service with supply cord
- 20 gallon fast recovery electric water heater
- Easy touch rocker light switches throughout
- 40,000 BTU propane furnace with auto ignition
- R-14 fiberglass floor insulation
- R-11 fiberglass sidewall insulation
- R-33 cellulose blown insulation
- Black iron gas pipe run to front hitch end
- Aluminum heat ducting with coordinated floor registers
- Under sink waterline shut-off valves
- Exterior water heater door on 20 gallon electric water heater
- Interior water heater switch on 20 gallon electric water heater
- Pre-wire for ceiling fan in living room and bedroom (N/A in bedroom with loft above)
- Pre-wire for TV and phone jacks in living room, bedroom and loft
- Dimmer switch in dining room

CONSTRUCTION

- Full 10" I-beam chassis construction with 4 axles
- Transverse 2" x 6" #2 or better fir floor joists 16" O.C.
- Detachable hitch from main chassis
- Woven simplex underbelly material
- 8' x 12' high density floor decking
- Full overheight sidewalls in cathedral area
- 2" x 4" sidewalls 16" O.C.
- Pre-engineered 80lb. scissor trusses 16" O.C.
- Nominal 9/12 pitch roof in cathedral area, 2/12 in loft area
- 30 gauge steel strapping for truss to sidewall and floor to sidewall strength
- RPTIA approved
- ANSI approved

IMPORTANT: A word about this brochure. We have tried to make this as comprehensive and factual as possible. And we hope you find it helpful. However, since the time of printing some of the information you will find here may have been updated. The right is reserved to make changes at anytime without notice, in prices, colors, materials, specifications and models. Artist renderings and floorplans used on this brochure are not necessarily to scale and may include optional features. Square footage dimensions are based on exterior wall to exterior wall and are an approximate figure. All capacities are approximate and dimensions are nominal. Park Models must be trans-

Cavco

PARK HOMES & CABINS

Cavco Specialty
2602 S 35th Ave. Phoenix AZ 85009
602-484-0171 | 800-622-8260
www.cavcoparkhomes.com

