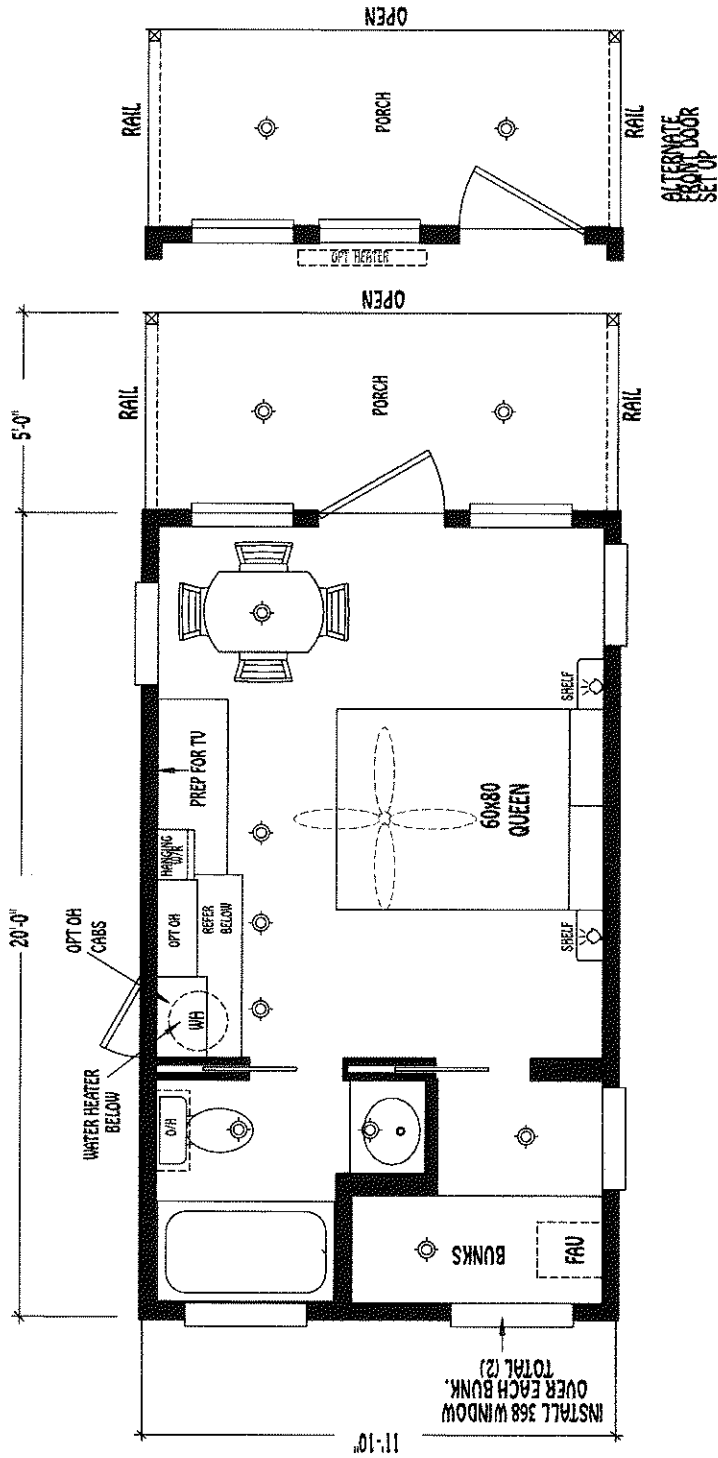
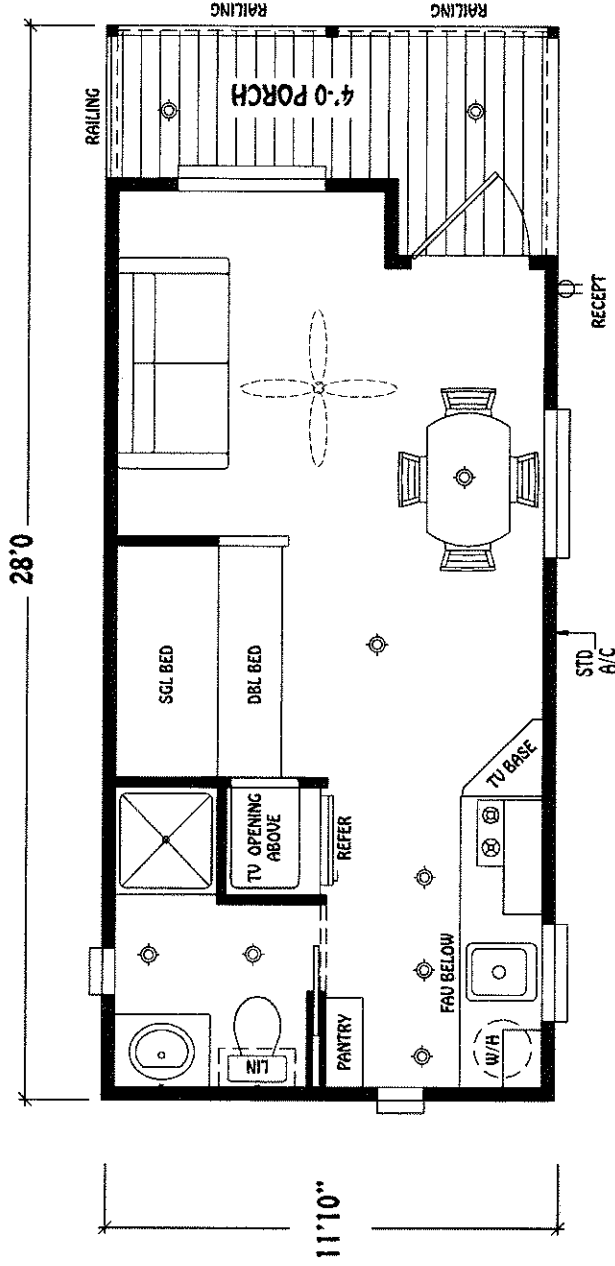
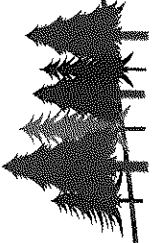


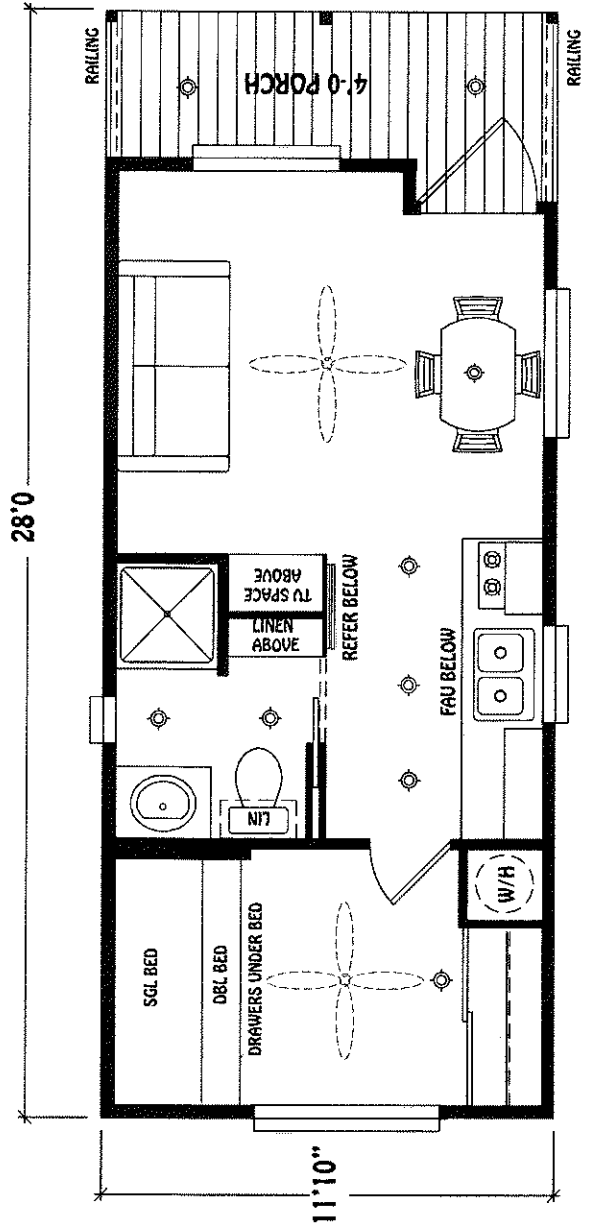
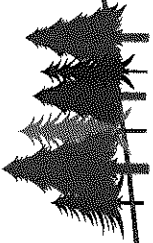
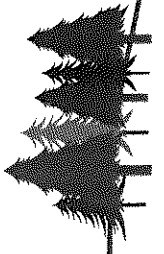
- READING LIGHT
- CHANDELIER
- WALL LIGHT
- PLANT SHELF
- TV JACK
- TOEKICK REGISTER
- CEILING FAN
- CAN LITES
- GLD
- GLD
- PHONE
- FLOOR REGISTER
- SKYLITE



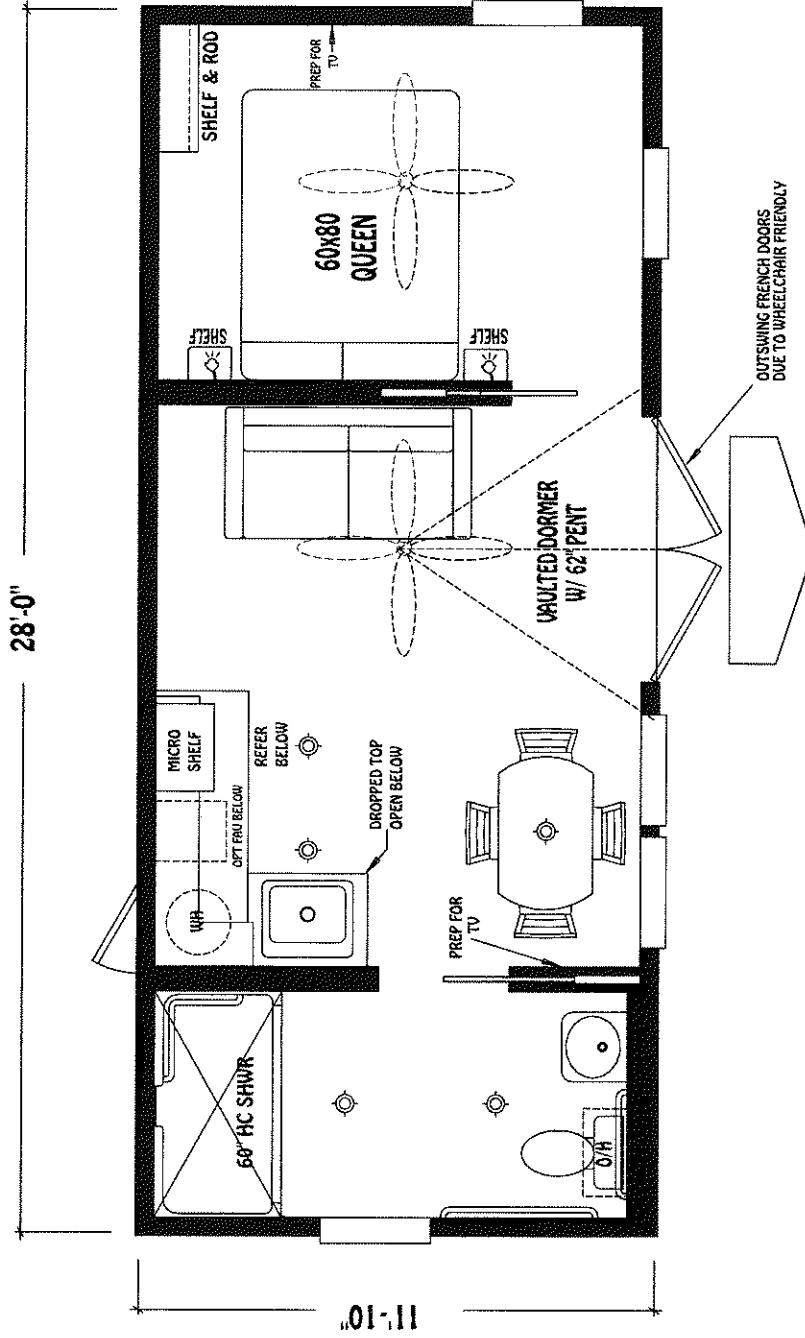
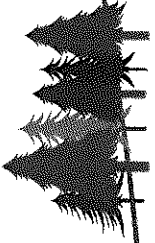
-  READING LIGHT
-  CHANDELIER
-  WALL LIGHT
-  CAN LITES
-  PLANT SHELF
-  GLD GLASS DOOR
-  TV JACK
-  PHONE
-  TOERICK REGISTER
-  FLOOR REGISTER
-  CEILING FAN
-  SKYLITE



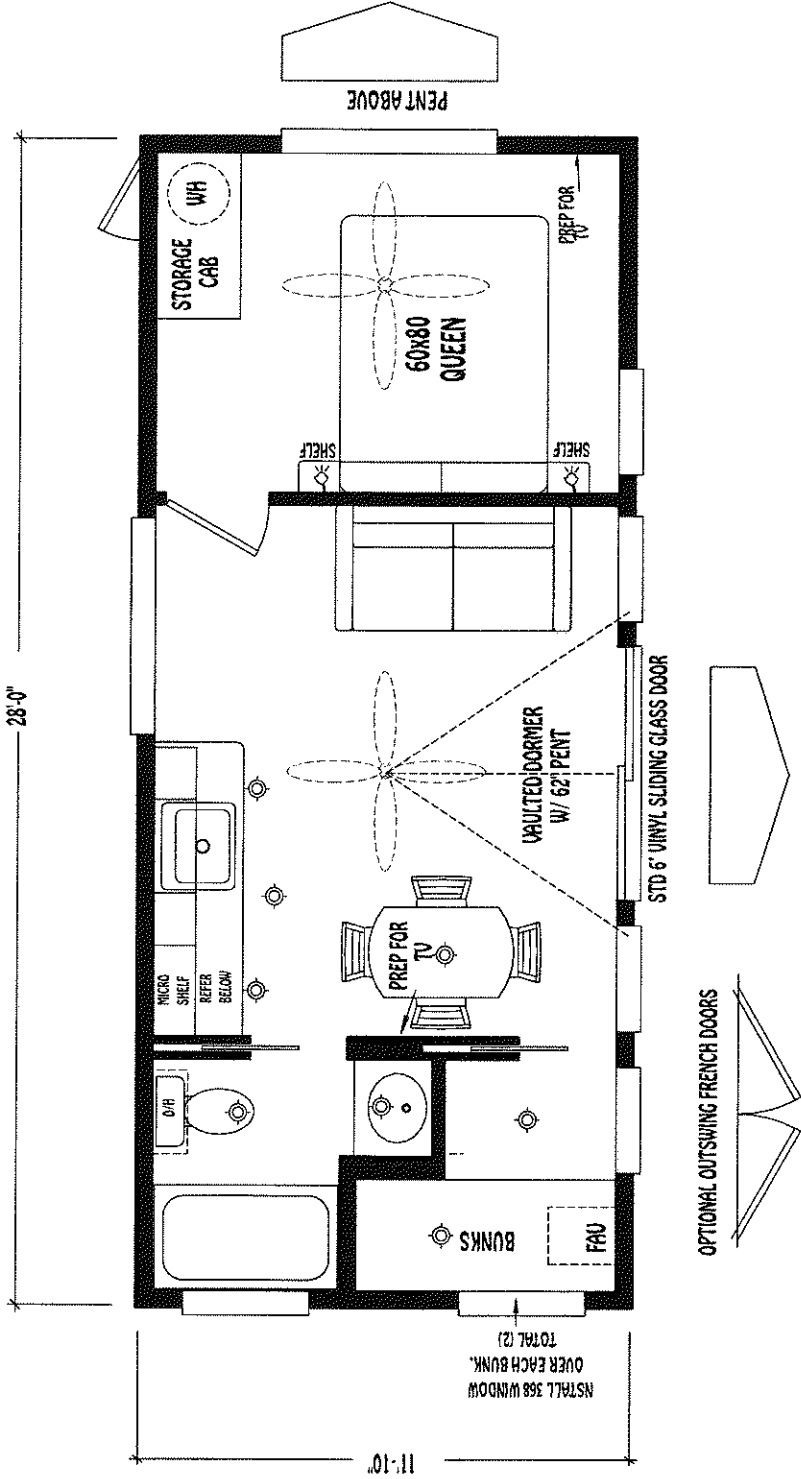
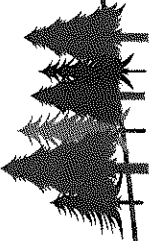
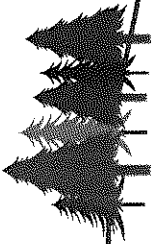
- (R) READING LIGHT
- (C) CHANDELIER
- (W) WALL LIGHT
- CAN LITES
- PS PLANT SHELF
- GLD GLASS DOOR
- (TV) TV JACK
- (TK) TOEKICK REGISTER
- (PI) PHONE
- FLOOR REGISTER
- (PS) STD. A/C
- RECEPT
- RAILING
- RAILING
- RAILING
- RAILING
- 4'-0" PORCH
- SGL BED
- DBL BED
- TV OPENING ABOVE
- REFER
- FAU BELOW
- TV BASE
- W/A
- PANTRY
- LIN
- (G) CEILING FAN
- (X) SKYLITE



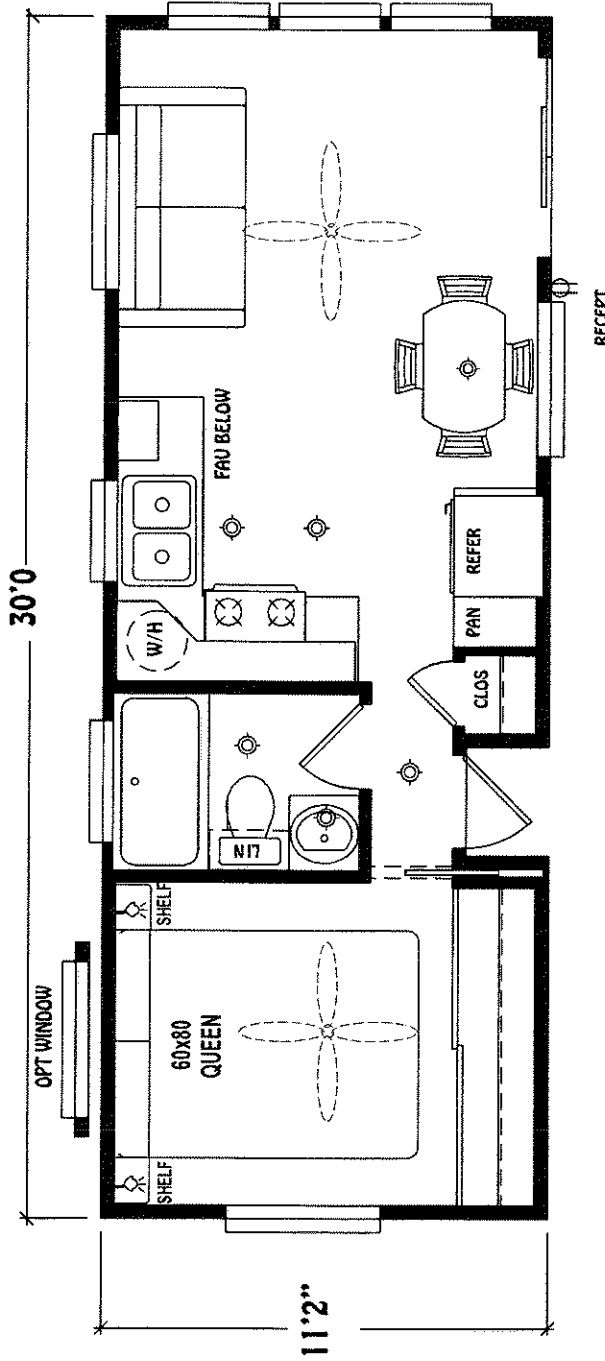
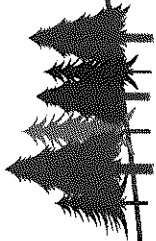
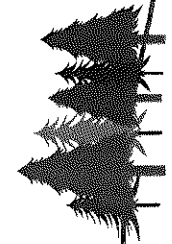
- (R) READING LIGHT
- (C) CHANDELIER
- (W) WALL LIGHT
- CAN LITES
- PS PLANT SHELF
- GLD GLASS DOOR
- TV TV JACK
- PH PHONE
- TK TOEKICK REGISTER
- FR FLOOR REGISTER
- CEILING FAN
- SKYLITE



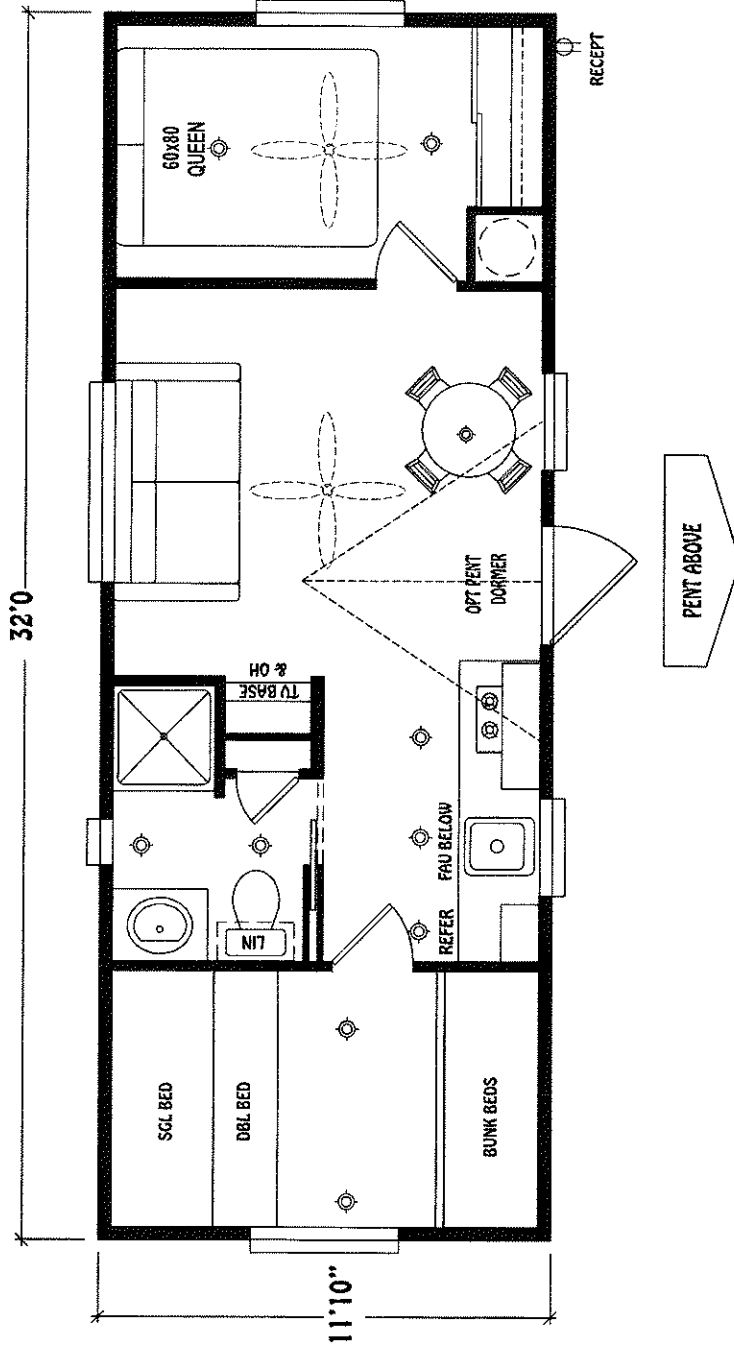
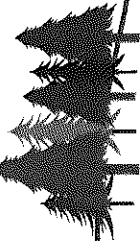
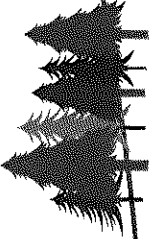
- READING LIGHT
- CHANDELIER
- WALL LIGHT
- CAN LITES
- PLANT SHELF
- GLASS DOOR
- TV JACK
- PHONE
- TOBKICK REGISTER
- FLOOR REGISTER
- CEILING FAN
- SKYLITE



- (R) READING LIGHT
- (W) WALL LIGHT
- (C) CHANDELIER
- (CAN) CAN LITES
- (PS) PLANT SHELF
- (GLD) GLASS DOOR
- (TV) TV JACK
- (TK) TOEKICK REGISTER
- (FLOOR) FLOOR REGISTER
- (CEILING) CEILING FAN
- (PHONE) PHONE
- (SKYLITE) SKYLITE

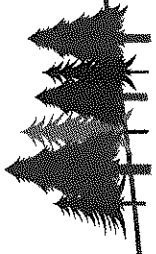
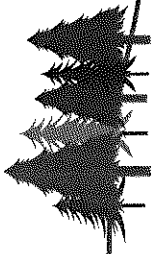


- READING LIGHT
- CHANDELIER
- WALL LIGHT
- PLANT SHELF
- PS
- TV JACK
- TK
- TOE KICK REGISTER
- CEILING FAN
- CAN LITES
- GLD
- GLASS DOOR
- PHONE
- PTI
- FLOOR REGISTER
- SKYLITE

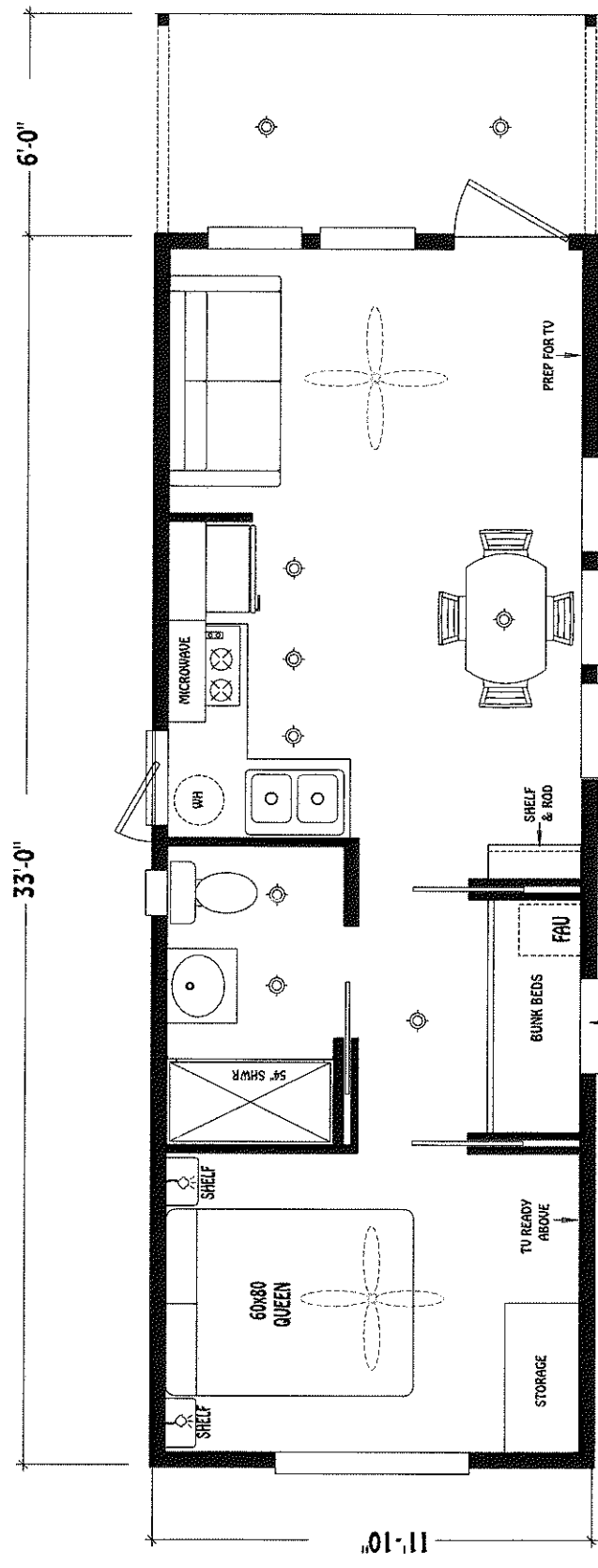


- READING LIGHT
- WALL LIGHT
- PLANT SHELF
- TV JACK
- TOEKICK REGISTER
- CEILING FAN
- CHANDELIER
- CAN LITES
- GLASS DOOR
- PHONE
- FLOOR REGISTER
- SKYLITE

Creekside Cabins

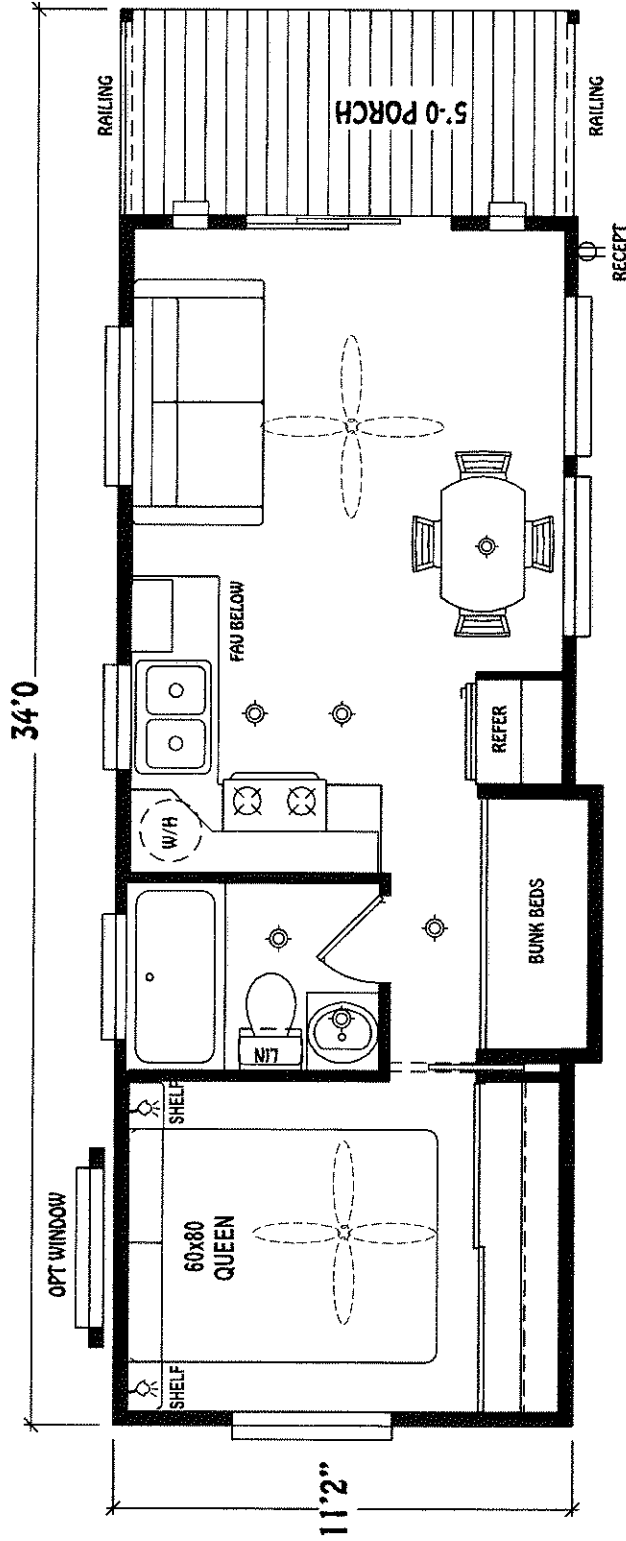
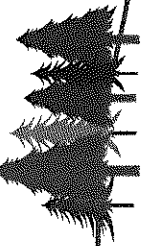
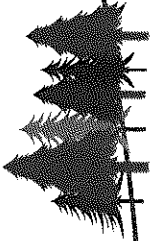


CC-3312-K

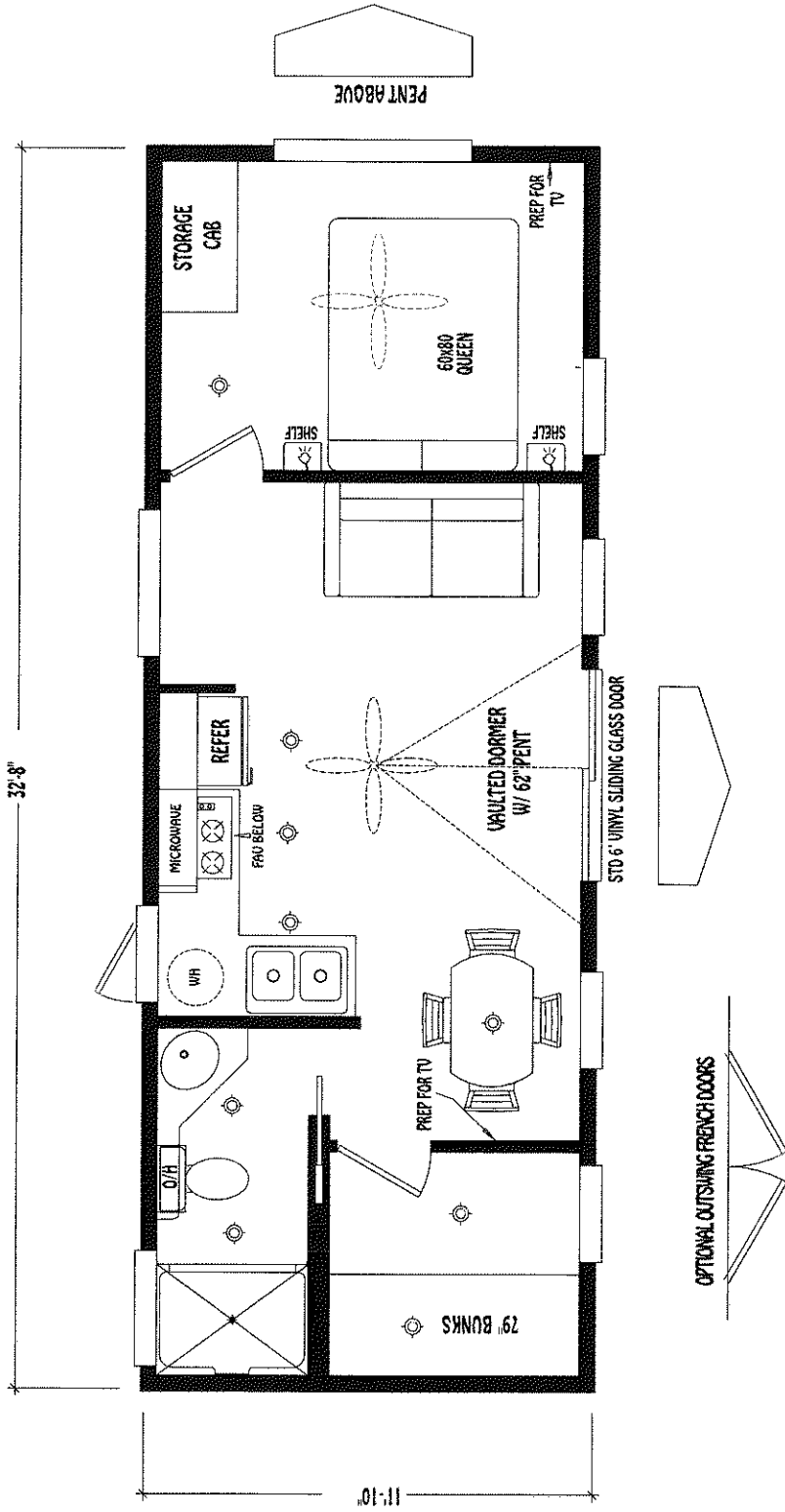
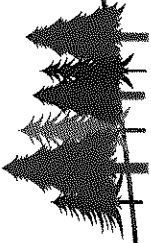
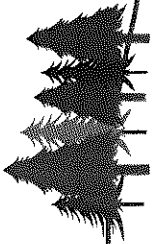


INSTALL 368 WINDOW OVER EACH BUNK, TOTAL (2)

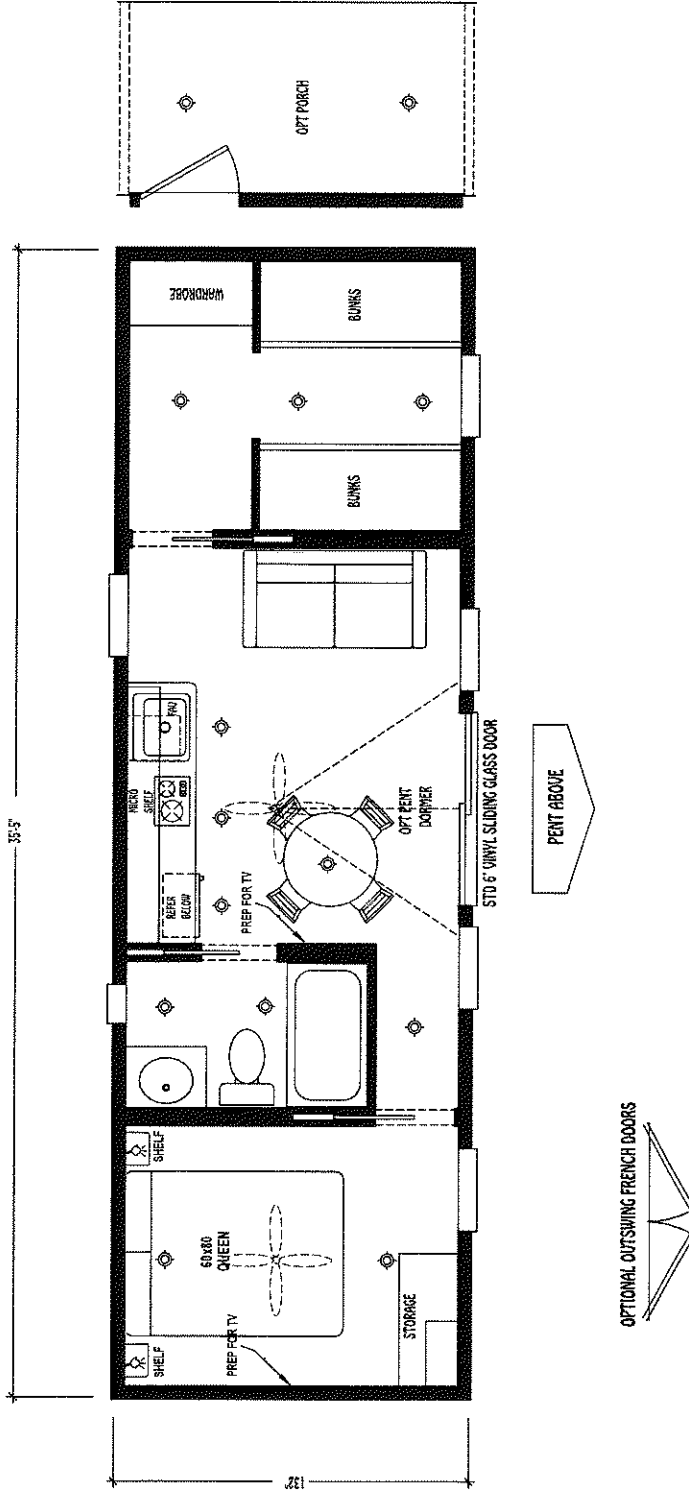
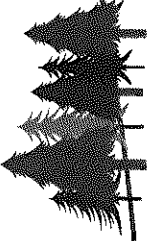
- READING LIGHT
- CHANDELIER
- WALL LIGHT
- CAN LITES
- PLANT SHELF
- GLD GLASS DOOR
- TV JACK
- PHONE
- TK TOEKICK REGISTER
- FLOOR REGISTER
- CEILING FAN
- SKYLITE



- READING LIGHT
- WALL LIGHT
- PLANT SHELF
- TV JACK
- CEILING FAN
- CHANDELIER
- CAN LITES
- GLD. GLASS DOOR
- PHONE
- FLOOR REGISTER
- SKYLITE
- TOEKICK REGISTER

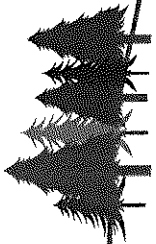


- READING LIGHT
- CHANDELIER
- WALL LIGHT
- PLANT SHELF
- GLD. GLASS DOOR
- CAN LITES
- TV JACK
- PHONE
- CEILING FAN
- TOEKICK REGISTER
- FLOOR REGISTER
- SKYLITE

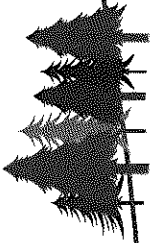


-  READING LIGHT
-  WALL LIGHT
-  CHANDELIER
-  CAN LITES
-  PS PLANT SHELF
-  GLD GLASS DOOR
-  TV TV JACK
-  PH PHONE
-  TK TOE KICK REGISTER
-  FLOOR REGISTER
-  CEILING FAN
-  SKYLITE

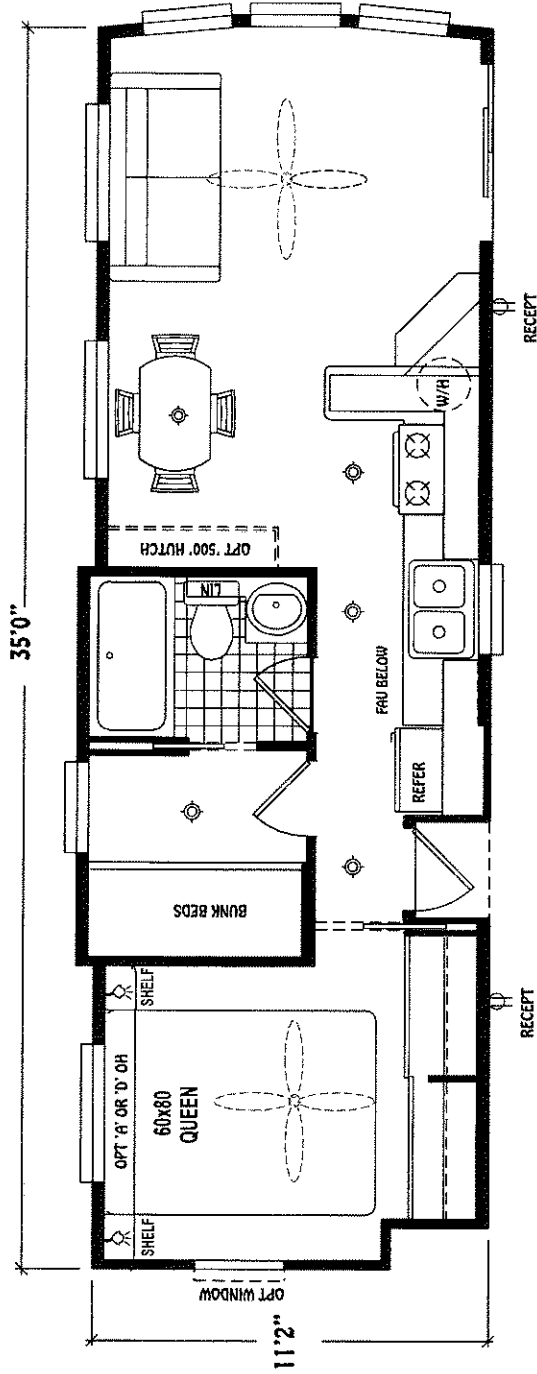
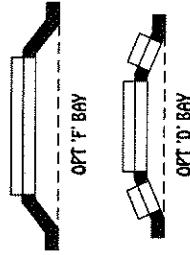
Creekside Cabins



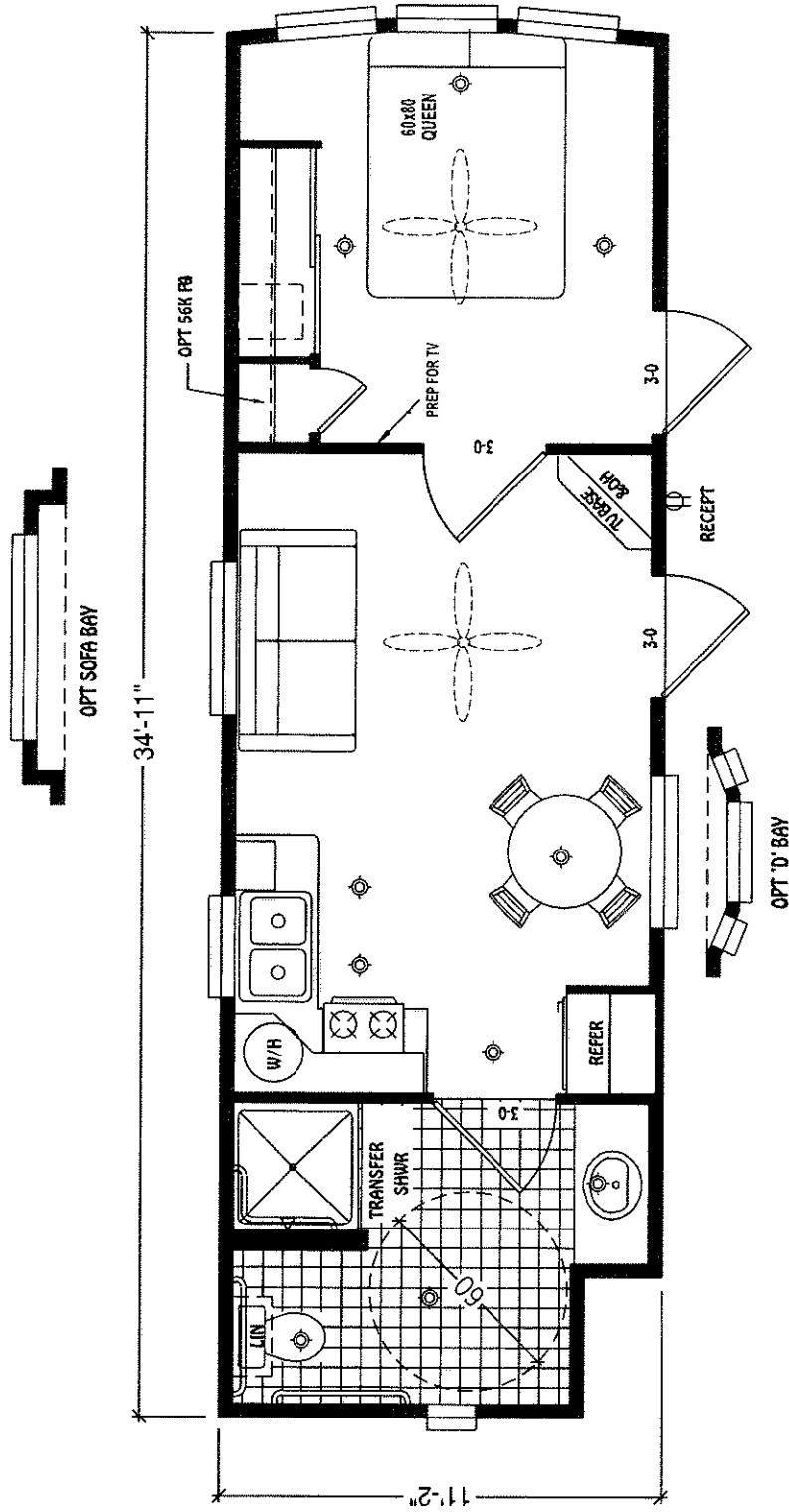
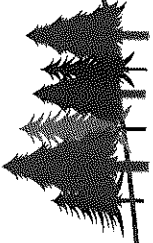
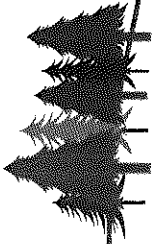
Cavco
PARK HOMES & CABINS



CC-3512-B



- READING LIGHT
- CHANDELIER
- WALL LIGHT
- PLANT SHELF
- TV JACK
- TOEKICK REGISTER
- CEILING FAN
- CAN LITES
- GLASS DOOR
- PHONE
- FLOOR REGISTER
- SKYLITE



- READING LIGHT
- CHANDELIER
- WALL LIGHT
- CAN LITES
- PLANT SHELF
- PS
- TV JACK
- TK
- TOEKICK REGISTER
- FLOOR REGISTER
- PHONE
- PH
- GLD
- GLASS DOOR
- CEILING FAN
- SKYLITE