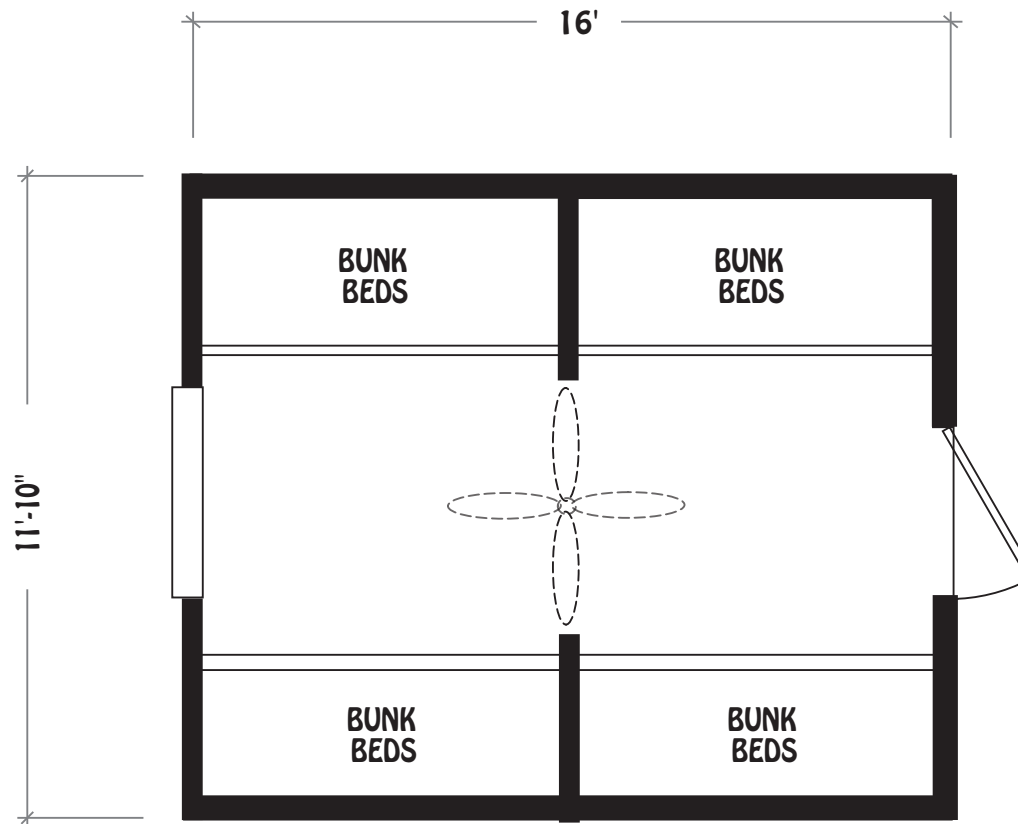
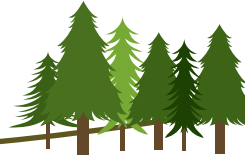
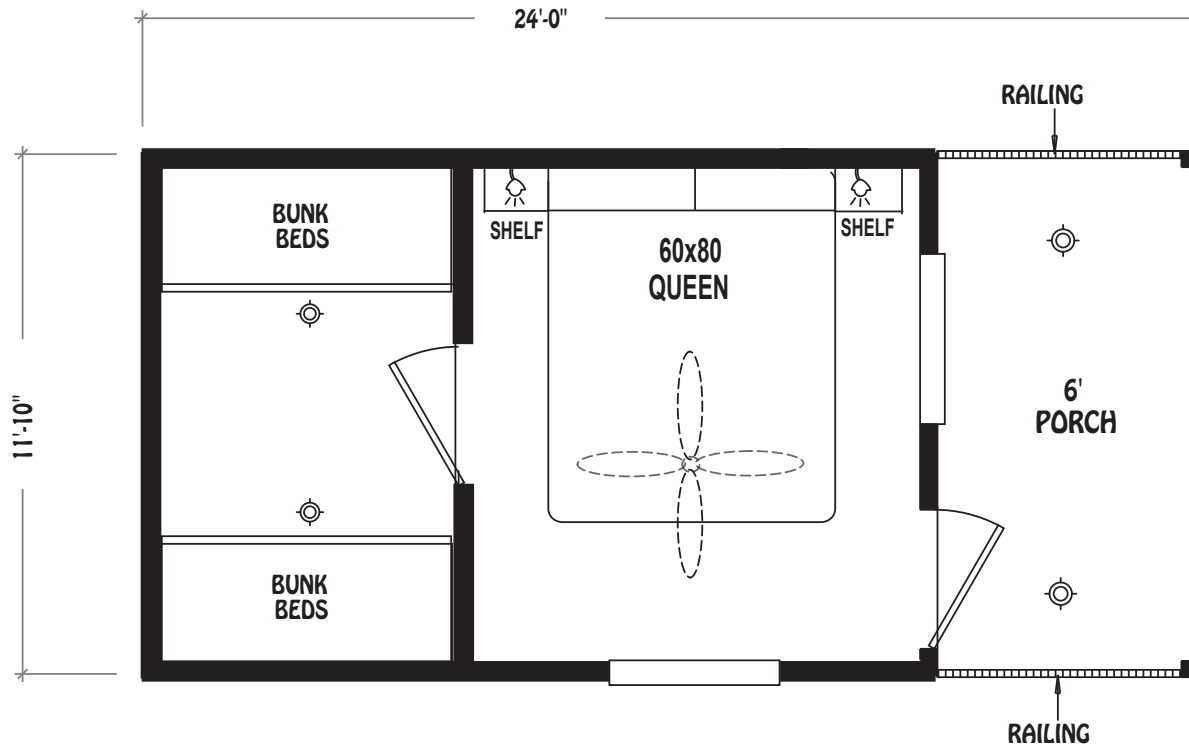
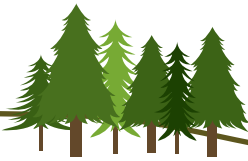


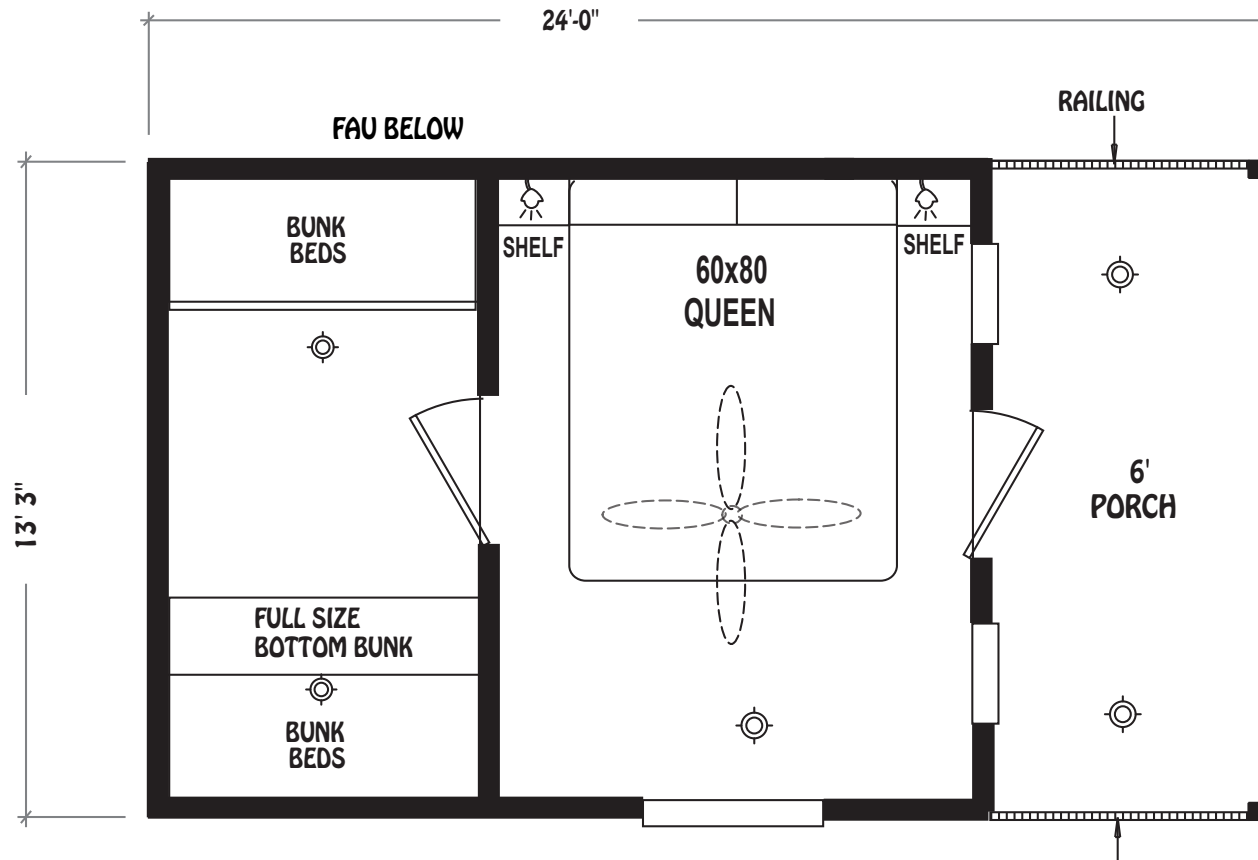
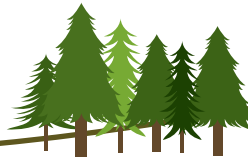
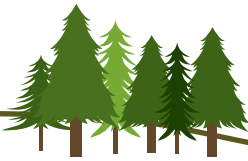
- | | | | | | |
|---------------|------------|-------------|---------|------------------|-------------|
| READING LIGHT | WALL LIGHT | PLANT SHELF | TV JACK | TOEKICK REGISTER | CEILING FAN |
| CHANDELIER | CAN LITES | GLASS DOOR | PHONE | FLOOR REGISTER | SKYLITE |



- | | | | | | |
|---------------|------------|----------------|---------|------------------|-------------|
| READING LIGHT | WALL LIGHT | PLANT SHELF | TV JACK | TOEKICK REGISTER | CEILING FAN |
| CHANDELIER | CAN LITES | GLD GLASS DOOR | PHONE | FLOOR REGISTER | SKYLITE |



- | | | | | | |
|---------------|------------|----------------|----------|------------------|-------------|
| READING LIGHT | WALL LIGHT | PLANT SHELF | TV JACK | TOEKICK REGISTER | CEILING FAN |
| CHANDELIER | CAN LITES | GLD GLASS DOOR | PH PHONE | FLOOR REGISTER | SKYLITE |



- | | | | | | |
|------------------------|---------------------|-----------------------|-------------------|----------------------------|-----------------------|
| R READING LIGHT | W WALL LIGHT | PS PLANT SHELF | TV TV JACK | TK TOEKICK REGISTER | CF CEILING FAN |
| C CHANDELIER | CL CAN LITES | GLD GLASS DOOR | PH PHONE | FR FLOOR REGISTER | SK SKYLITE |



Standard Features

INTERIOR

- 1"x6" T&G clear sealed spruce throughout
- Cathedral ceilings throughout except loft areas
- Real wood interior passage and pocket doors with heavy duty hardware
- 2" white faux mini blinds throughout except clerestory windows
- Woodgrain Congoleum Vinyl flooring throughout
- 1x sealed spruce trim throughout
- Upgrade lighting package
- Smoke detector
- Fire extinguisher
- LP Leak Gas Detector in units with propane
- Heavy steel welded and powder coated loft railing (per floorplan)
- Heavy steel welded and powder coated bunk railing (per floorplan)
- Heavy steel welded and powder coated bunk ladder (per floorplan)
- Satin fixtures throughout
- Vinyl cove base throughout
- Ceiling fan with light in main room
- Pre-wire on wall for TV
- 2-Bunk mattresses in bunk room (per floorplan)

KITCHEN / BATHROOM

- Laminate countertops and backsplashes
- Full appliance packages (per floorplan and specifications)
- Real wood cabinet doors and face frames with hidden hinges
- Choice of upgraded cabinet pulls
- Drawers with double steel roller guides
- Satin finish single lever kitchen faucet (Per Floorplan)
- Stainless steel kitchen sink (Per Floorplan)
- "Lasco" One piece fiberglass tub / shower or shower only
- Bathroom exhaust fan

EXTERIOR

- Colored metal roof
- Stained "Certaineed" lap exterior siding with OSB wood wrap and building wrap
- 2"x4" Cedar exterior trim around windows and corners
- Black exterior lights at each door
- Beige vinyl framed low "E" dual glaze windows throughout
- Front and rear overhangs
- Exterior GFI receptacle
- Beige french exterior door with internal mini blind

PLUMBING, ELECTRICAL, HEATING & INSULATION

- PEX waterlines with low point drain
- Residential style U.L. approved electrical devices throughout
- 30 or 50 amp exterior main panel service with supply cord
- Easy touch rocker light switches throughout
- R-14 fiberglass floor insulation
- R-11 fiberglass sidewall insulation
- R-33 cellulose blown insulation (per roof pitch)
- Black iron gas pipe run to front hitch end
- Under sink waterline shut-off valves
- 20 gallon electric water with metal pan and drain
- GFI protection in bath and kitchen
- 40,000 BTU propane gas furnace

CONSTRUCTION

- Full 10"/12" I-beam chassis construction
- Transverse 2" x 6" #2 or better fir floor joists 16" O.C.
- Detachable hitch from main chassis
- Woven simplex underbelly material
- OSB Wood Floor Decking
- 2" x 4" sidewalls 16" O.C.
- 30 gauge steel strapping for truss to sidewall and floor to

sidewall strength

- Composite decking on porch models (Per Floorplan)
- NTA GREEN SEAL OF APPROVAL
- RPTIA approved
- ANSI approved

POPULAR OPTIONS

- Wall mount A/C unit
- 2',3' or 4' electric base board heaters with T-stat
- "RINNAI" Tankless waterheater
- Vinyl roller shades on each window
- Solid surface countertops
- DVD surround sound system
- TV wall bracket
- HDMI Cable with DVD Surround System
- Drape package
- "SHAW" laminate wood flooring
- 4" - 8" Side Eaves

YOUR CAVCO RETAILER

