

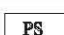



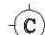





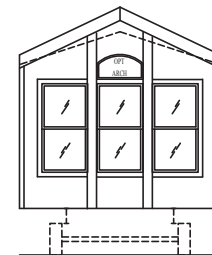
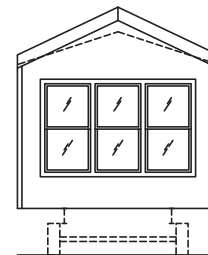
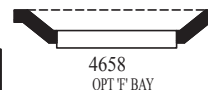
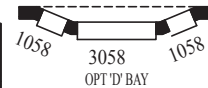
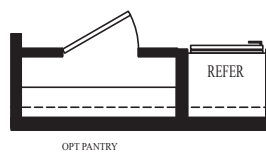
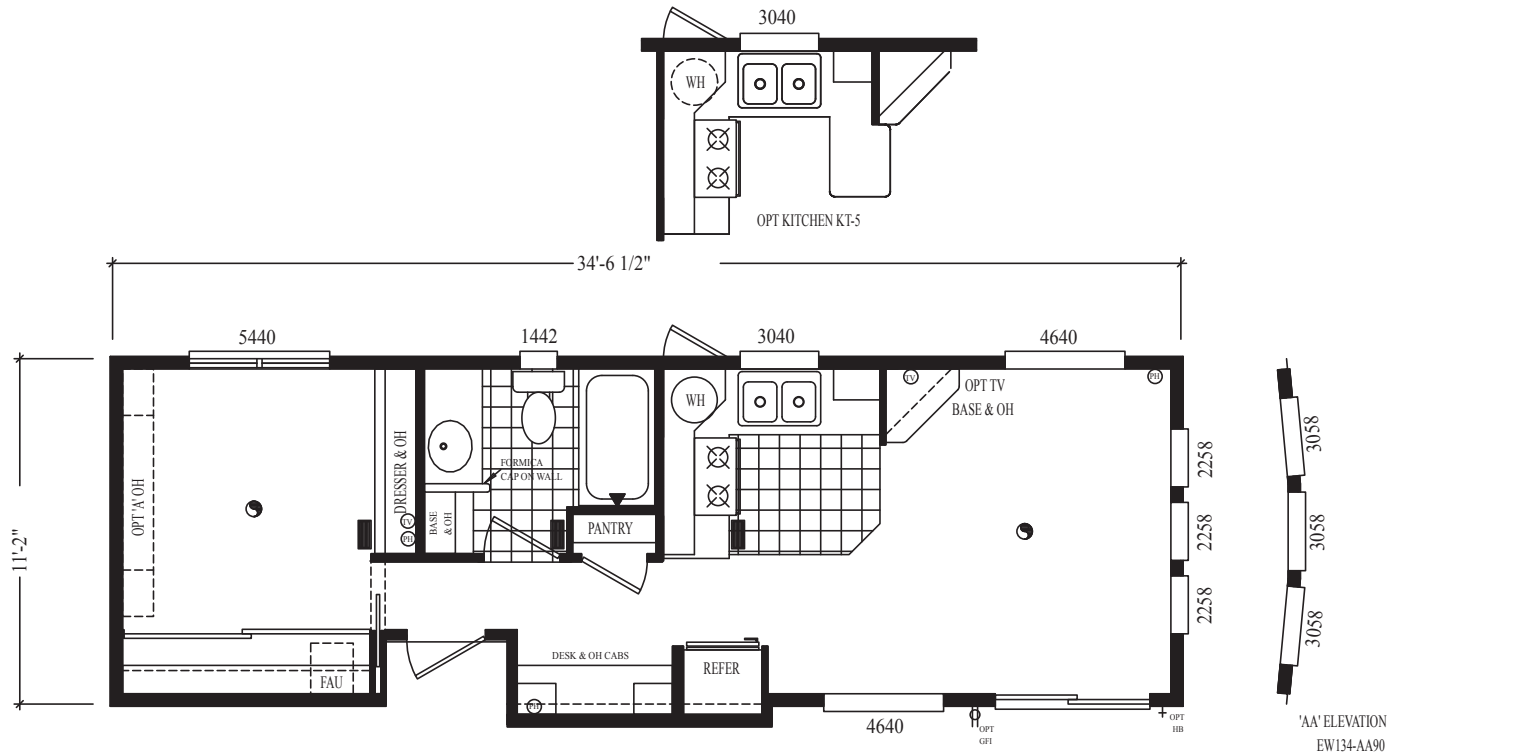


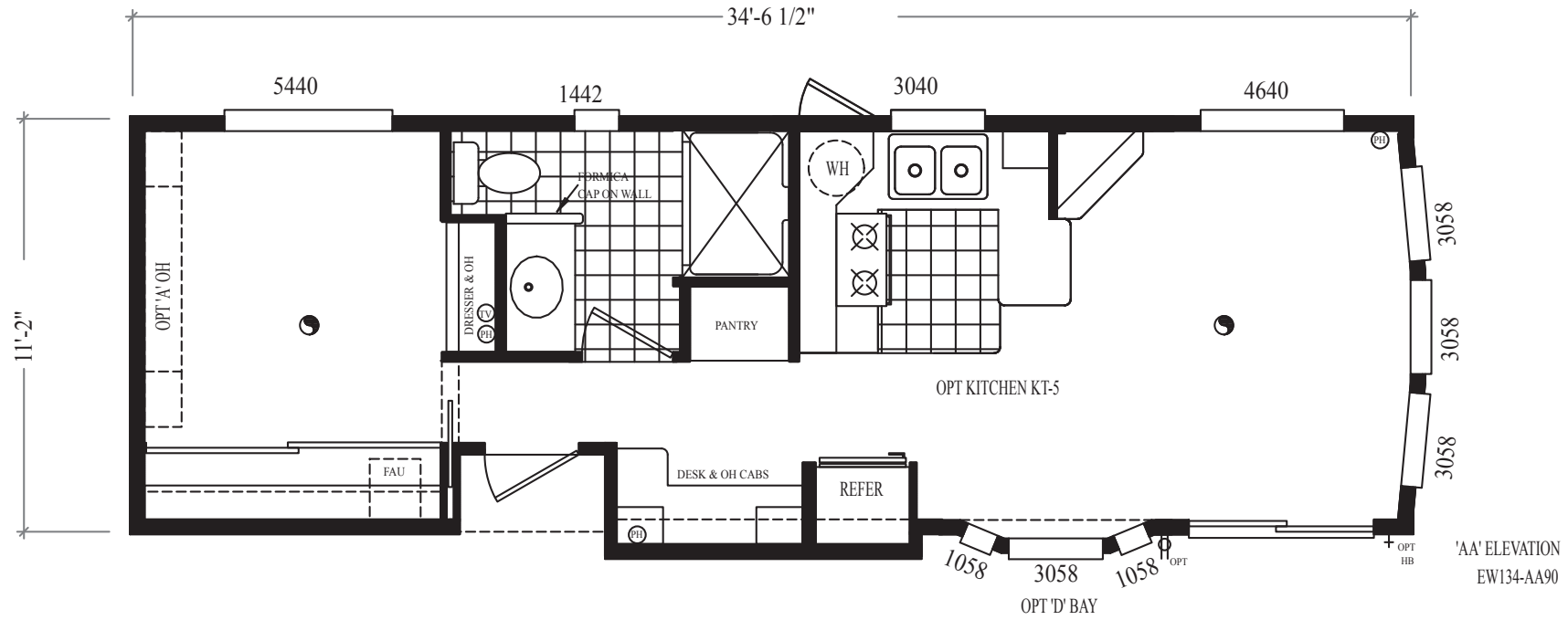
TRUSS # 117

- | | | | | | |
|---|--|--|--|---|---|
|  READING LIGHT |  WALL LIGHT |  PS PLANT SHELF |  TV TV JACK |  TK TOEKICK REGISTER |  CEILING FAN |
|  CHANDELIER |  CAN LITES |  GLD GLASS DOOR |  PH PHONE |  FLOOR REGISTER |  SKYLITE |

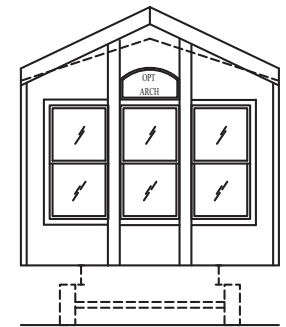
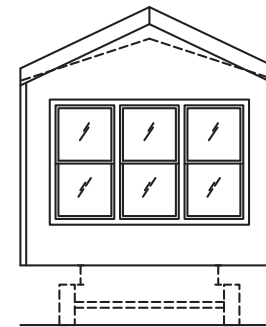


TRUSS # 117

- | | | | | | |
|---|--|---|---|--|---|
|  READING LIGHT |  WALL LIGHT |  PLANT SHELF |  TV JACK |  TOEKICK REGISTER |  CEILING FAN |
|  CHANDELIER |  CAN LITES |  GLASS DOOR |  PHONE |  FLOOR REGISTER |  SKYLITE |



TRUSS # 117



OPT 'AA' ELEVATION

- | | | | | | |
|--|---|---|--|---|--|
|  READING LIGHT |  WALL LIGHT |  PLANT SHELF |  TV JACK |  TOEKICK REGISTER |  CEILING FAN |
|  CHANDELIER |  CAN LITES |  GLD GLASS DOOR |  PHONE |  FLOOR REGISTER |  SKYLITE |

DC Series

Standard Features

INTERIOR

- Tape and textured walls throughout
- Cathedral ceilings throughout
- Residential style white interior passage doors
- Custom drapery with mini blinds
- Shaw carpeting with padding and tack strip
- Egg shell ice white interior paint throughout
- Lighting package throughout
- Smoke detector
- Fire extinguisher
- LP Leak Gas Detector

KITCHEN

- General Electric 30" gas range
- General Electric 15.8 cu. ft. double door frost free refrigerator
- 30" range hood with exhaust fan and light
- C-4 Raised panel cabinet doors
- Upgraded cabinet and drawer pulls throughout
- Drawers with double steel roller guides
- Laminate countertops throughout
- Double lever kitchen faucet
- Composite kitchen sink
- Exposed cabinet door hinges
- Matching woodgrain overhead cabinet interiors

BATHROOM

- Lasco fiberglass one piece tub/shower
- Lavy bath faucet
- Single lever tub diverter with shower head
- Satin towel bar and tissue holder
- Lavy cabinet with drop-in acrylic sink

BEDROOM

- Full width wardrobe with sliding doors
- Dresser with overhead cabinet (per floorplan)
- 54" x 40" egress window

EXTERIOR

- "M" 3-window flat front end
- 20-year shingled roof
- Vertical "Smart Panel" exterior siding
- Rear door with window, internal mini blind and deadbolt
- Exterior lights at each door
- White aluminum framed dual glaze windows
- White aluminum framed dual glaze sliding glass door
- Front eave overhang
- Exterior GFI receptacle by sliding glass door

PLUMBING, ELECTRICAL, HEATING & INSULATION

- PEX waterlines with low point drain
- U.L. approved electrical devices throughout
- 50 amp exterior main panel service with 25' supply cord
- 20 gallon fast recovery electric water heater w/ exterior door
- Pan and drain line for electric water heater
- Easy touch rocker light switches throughout
- R-7 fiberglass floor insulation
- R-11 fiberglass sidewall insulation
- R-22 cellulose blown insulation
- Black iron gas pipe run to front hitch end
- Under sink waterline shut-off valves
- Interior water heater switch on 20 gallon electric water heater
- Pre-wire for ceiling fan in living room and bedroom
- Pre-wire for TV and phone jacks in living room and bedroom
- Dimmer switch in dining room

CONSTRUCTION

- Full I-beam chassis construction
- Transverse 2" x 6" floor joists
- Detachable hitch from main chassis
- Woven simplex underbelly material
- 8' x 12' high density floor decking
- Full height 7'-6" sidewalls
- 2" x 4" sidewalls 16" O.C.
- Pre-engineered scissor trusses 16" O.C.
- Nominal 6/12 pitch roof
- 30 gauge steel strapping for truss to sidewall and floor to sidewall strength
- RPTIA approved
- ANSI approved
- NTA "GREEN" approved

POPULAR OPTIONS

- Spacesaver Microwave
- 100 Amp Electrical Service
- Bedroom Overhead Cabinet
- DVD Surround Sound System
- Mirrored Wardrobe Doors in Bedroom
- Toe Kick Registers
- Dining Room Bay Window

YOUR CAVCO RETAILER

