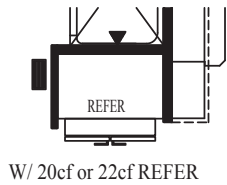
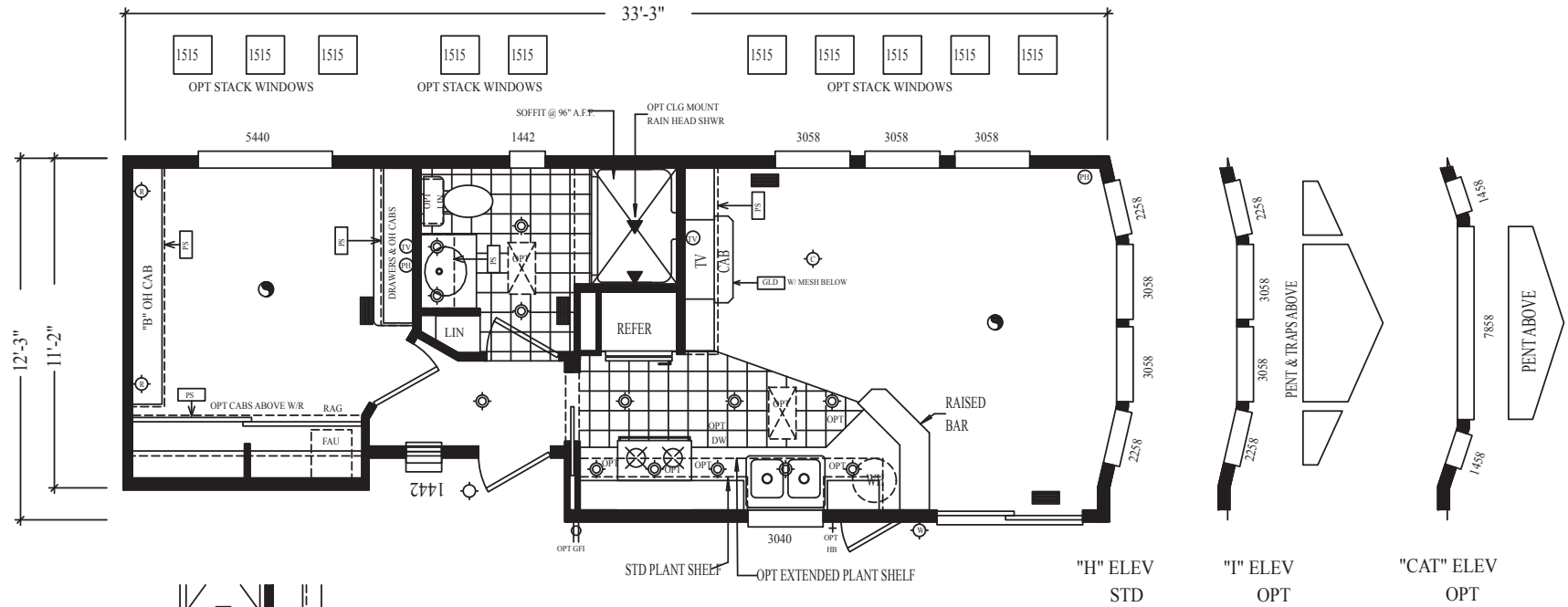
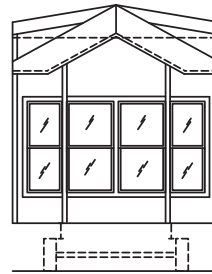


- READING LIGHT
- WALL LIGHT
- PLANT SHELF
- TV JACK
- TOEKICK REGISTER
- CEILING FAN
- CHANDELIER
- CAN LITES
- GLASS DOOR
- PHONE
- FLOOR REGISTER
- SKYLITE



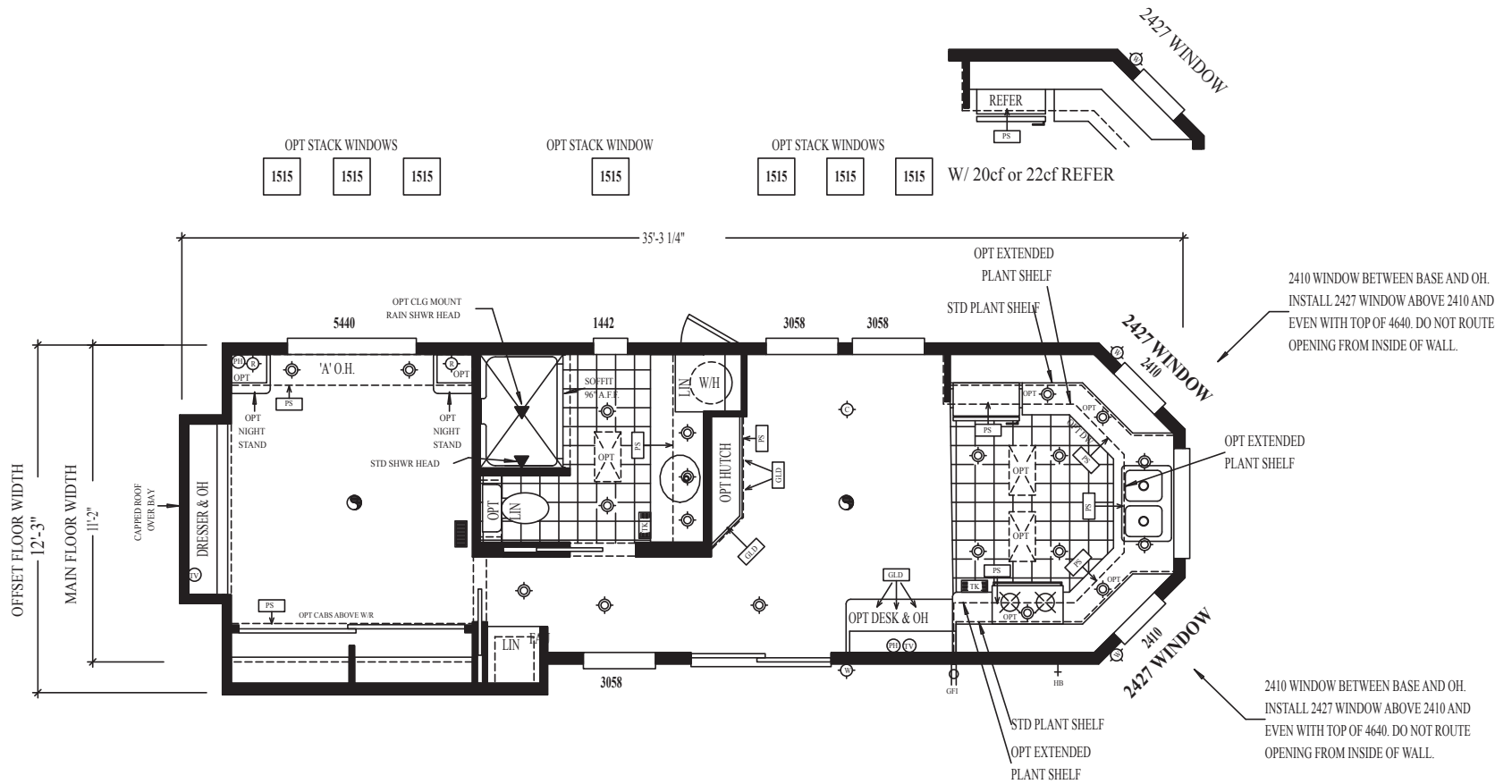
Desert Rose "H" 2000 Series
Front Elevation
Trusses: L 2/12 - 147
& CA 6/12 -134



Desert Rose "I" 2000 Series
Front Elevation
Trusses: L 2/12 - 147
& CA 6/12 -134



- | | | | | | |
|---------------|------------|-------------|---------|------------------|-------------|
| READING LIGHT | WALL LIGHT | PLANT SHELF | TV JACK | TOEKICK REGISTER | CEILING FAN |
| CHANDELIER | CAN LITES | GLASS DOOR | PHONE | FLOOR REGISTER | SKYLITE |



**Desert Rose 2000 Series
Front Elevation**

**Trusses: L 2/12 - 147
& Factory Box Front**

- | | | | | | |
|----------------------|-------------------|-----------------------|----------------|-------------------------|--------------------|
| READING LIGHT | WALL LIGHT | PLANT SHELF | TV JACK | TOEKICK REGISTER | CEILING FAN |
| CHANDELIER | CAN LITES | GLD GLASS DOOR | PHONE | FLOOR REGISTER | SKYLITE |

Desert Rose

Standard Features

INTERIOR

- Tape and textured walls with rounded corners throughout
- Tape and textured plant shelves (per floorplan and design)
- 9'6" flat ceilings throughout
- Large TV base cabinet with smoked glass/mesh cabinet doors (per floorplan)
- Double door TV overhead cabinet with glass doors (per floorplan) (Custom overhead cabinet for flat screen TV available)
- White 2-panel interior passage & pocket doors w/ heavy duty hardware
- Wood Valances in livingroom with mini blinds (Inserts Opt.)
- Shaw upgrade carpeting with padding and tack strip
- High grade Congoleum linoleum in kitchen and bathroom
- Egg shell ice white interior paint throughout
- Bays in livingroom, diningroom, kitchen and bedroom (per floorplan)
- Upgrade lighting package
- Smoke detector
- Fire extinguisher
- LP Leak Gas Detector

KITCHEN

- General Electric 30" deluxe gas range
- General Electric 16.8 cu. ft. double door frost free refrigerator
- 30" range hood with exhaust fan and light
- Upgraded raised panel hardwood cabinet doors and face frames
- Upgraded cabinet door and drawer pulls throughout
- Adjustable double shelves in kitchen overhangs
- Drawers with double steel roller guides
- Laminate countertops throughout
- Satin finish single lever kitchen faucet with spray
- Extra large composite kitchen sink
- Concealed cabinet door hinges
- Matching woodgrain overhead cabinet interiors
- Am/Fm CD Player Installed Undercabinet
- Choice of U-Shaped Kitchen (per floorplan)

BATHROOM

- Lasco fiberglass one piece tub/shower with satin shower doors
- Satin finish single lever lavy faucet
- Satin finish single lever tub diverter with shower head
- Satin towel bar and tissue holder
- Recessed side medicine cabinet on wall
- Mirror over lavy cabinet
- Lavy cabinet with drop-in cultured marble sink

BEDROOM

- Full width wardrobe with mirrored sliding doors
- Single drawers below wardrobe
- Dresser with overhead cabinet (per floorplan)
- 54" x 40" egress window
- Complete tape and texture wardrobe interiors
- Overhead Cabinet on Wall

EXTERIOR

- "I" 4-window front bay ("I"pents/traps are optional)
- 30-year architectural shingled roof
- Vertical "Smart Panel" exterior siding
- Rear door with window, internal mini blind and deadbolt
- Exterior lights at each door
- White low "E" vinyl framed dual glaze windows
- White aluminum framed dual glaze sliding glass
- Front eave overhang
- Exterior GFI receptacle by sliding glass door

PLUMBING, ELECTRICAL, HEATING & INSULATION

- PEX waterlines with low point drain
- U.L. approved electrical devices throughout
- 50 amp exterior main panel service with supply cord
- 20 gallon fast recovery electric water heater w/ exterior door
- Easy touch rocker light switches throughout
- 40,000 BTU propane furnace with auto ignition
- R-14 fiberglass floor insulation
- R-11 fiberglass sidewall insulation
- R-22 cellulose blown insulation
- Black iron gas pipe run to front hitch end
- Aluminum heat ducting with coordinated floor registers
- Toe-kick registers (per floorplan and design)
- Under sink waterline shut-off valves

- Exterior water heater door on 20 gallon electric water heater
- Interior water heater switch on 20 gallon electric water heater
- Pre-wire for ceiling fan in living room and bedroom
- Pre-wire for TV and phone jacks in living room and bedroom
- Dimmer switch in dining room
- Lighting in bathroom
- 3-Light pendant chandelier

CONSTRUCTION

- Full I-beam chassis construction
- Transverse 2" x 6" Floor Joists
- Detachable hitch from main chassis
- Woven simplex underbelly material
- 8' x 12' high density floor decking
- 2" x 4" sidewalls 16" O.C.
- Pre-engineered scissor trusses 16" O.C.
- 30 gauge steel strapping for truss to sidewall and floor to sidewall strength
- RPTIA approved
- ANSI approved
- NTA "GREEN" approved

POPULAR OPTIONS

- Spacesaver Microwave
- 100 Amp Electrical Service
- Bedroom Overhead Cabinet
- DVD Surround Sound System
- Mirrored Wardrobe Doors in Bedroom
- Toe Kick Registers
- Dining Room Bay Window

YOUR CAVCO RETAILER