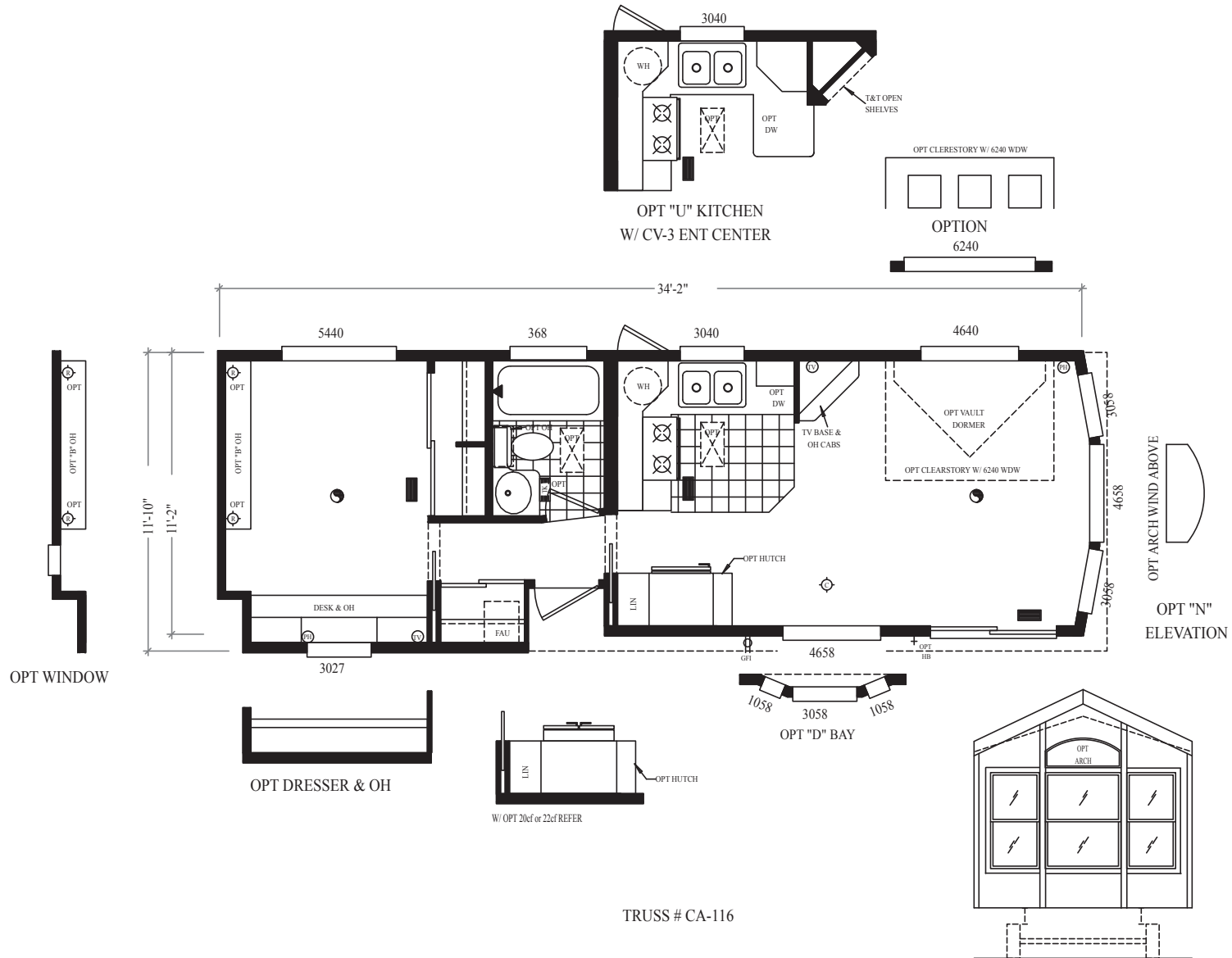


- | | | | | | |
|---------------|------------|-------------|---------|------------------|-------------|
| READING LIGHT | WALL LIGHT | PLANT SHELF | TV JACK | TOEKICK REGISTER | CEILING FAN |
| CHANDELIER | CAN LITES | GLASS DOOR | PHONE | FLOOR REGISTER | SKYLITE |

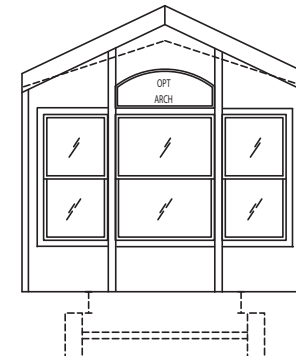
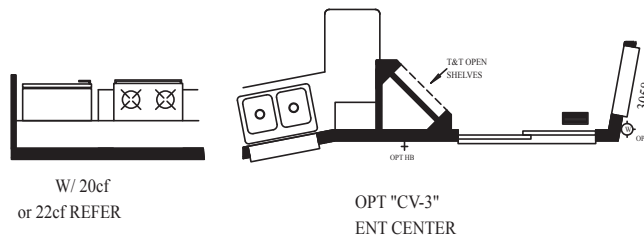
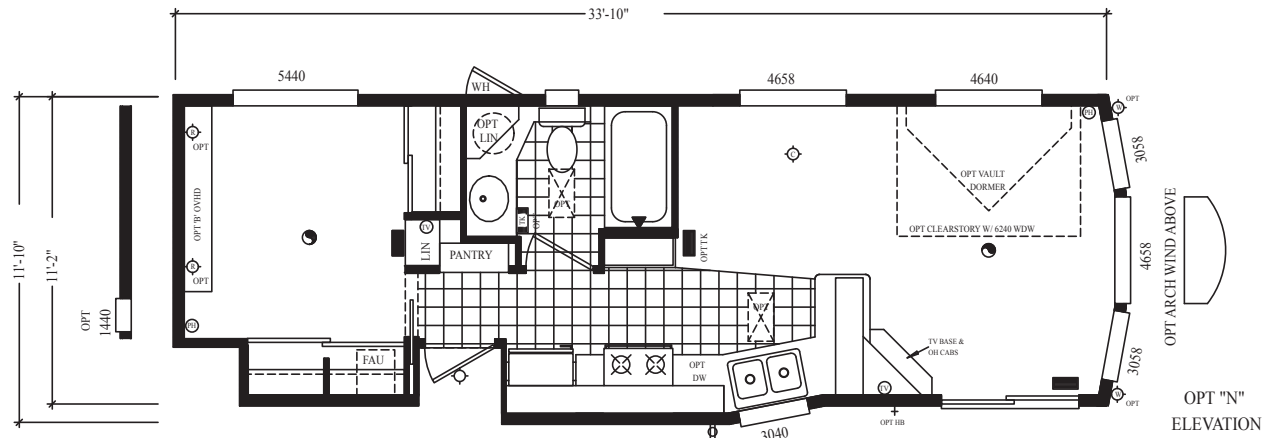
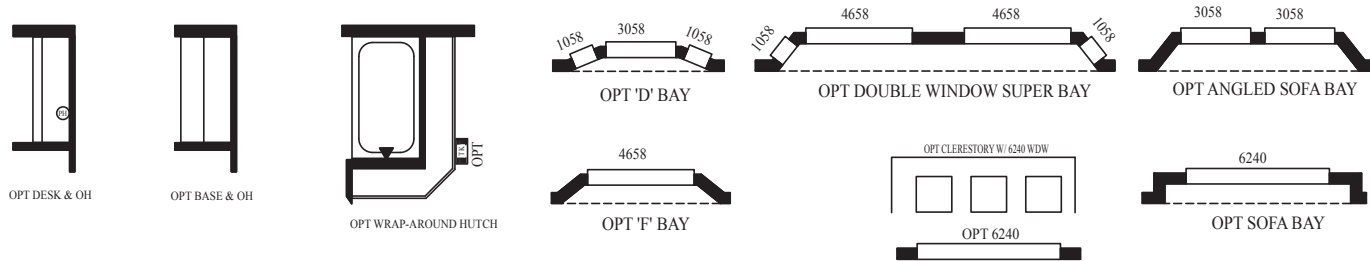


- | | | | | | |
|----------------------|-------------------|-----------------------|----------------|-------------------------|--------------------|
| READING LIGHT | WALL LIGHT | PLANT SHELF | TV JACK | TOEKICK REGISTER | CEILING FAN |
| CHANDELIER | CAN LITES | GLD GLASS DOOR | PHONE | FLOOR REGISTER | SKYLITE |

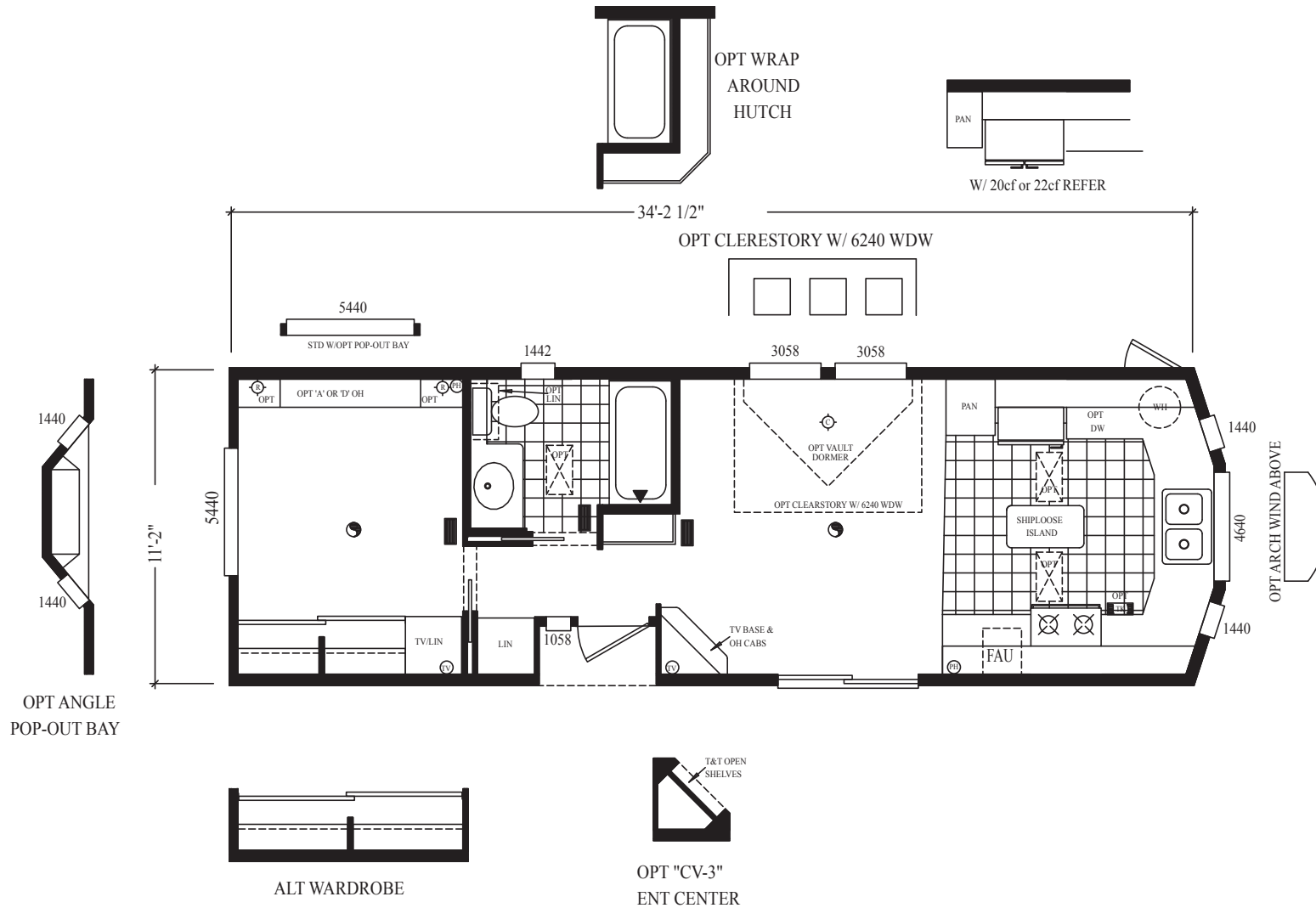
SUNBURST



C-10001-G

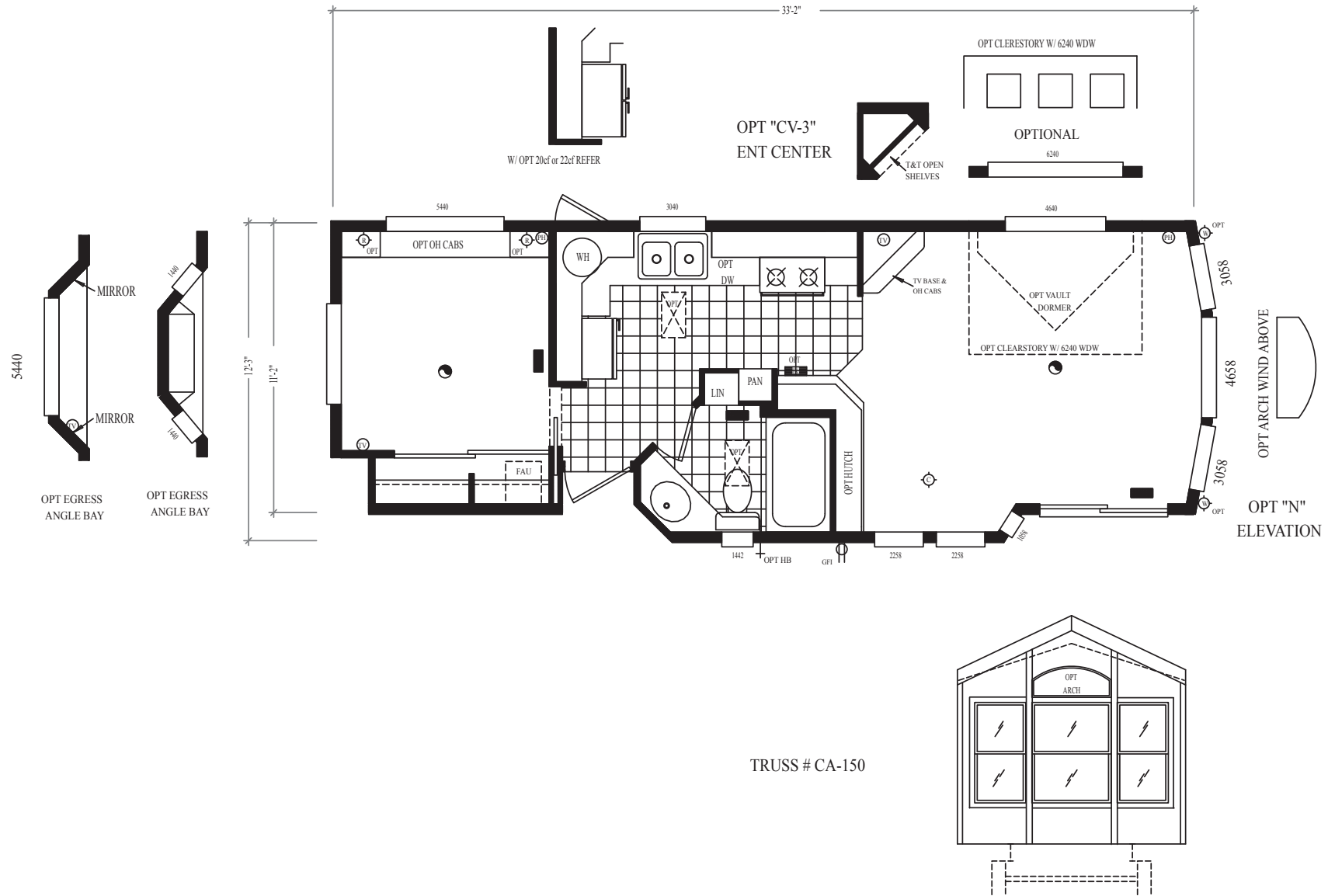


- READING LIGHT
- WALL LIGHT
- PLANT SHELF
- TV JACK
- TOEKICK REGISTER
- CEILING FAN
- CHANDELIER
- CAN LITES
- GLD GLASS DOOR
- PH PHONE
- FLOOR REGISTER
- SKYLITE



TRUSS # CA-117

- | | | | | | |
|----------------------|-------------------|-----------------------|----------------|-------------------------|--------------------|
| READING LIGHT | WALL LIGHT | PLANT SHELF | TV JACK | TOEKICK REGISTER | CEILING FAN |
| CHANDELIER | CAN LITES | GLD GLASS DOOR | PHONE | FLOOR REGISTER | SKYLITE |



- | | | | | | |
|------------------------|---------------------|-----------------------|-------------------|----------------------------|-----------------------|
| R READING LIGHT | W WALL LIGHT | PS PLANT SHELF | TV TV JACK | TK TOEKICK REGISTER | CF CEILING FAN |
| C CHANDELIER | CL CAN LITES | GLD GLASS DOOR | PH PHONE | FR FLOOR REGISTER | SK SKYLITE |

SUNBURST

Standard Features

INTERIOR

- Tape and textured walls with rounded corners throughout
- Cathedral ceilings throughout
- White interior passage and pocket doors with heavy duty hardware
- Custom drapery package with mini blinds
- Shaw upgrade carpeting with padding and tack strip
- High grade Congoleum linoleum in kitchen and bathroom
- Egg shell ice white interior paint throughout
- Upgrade lighting package
- Smoke detector
- Fire extinguisher
- LP Leak Gas Detector

KITCHEN

- General Electric 30" deluxe gas range
- General Electric 15.8 cu. ft. double door frost free refrigerator
- 30" range hood with exhaust fan and light
- Upgraded flat panel hardwood cabinet doors
- Upgraded cabinet door and drawer pulls throughout
- Drawers with double steel roller guides
- Laminate countertops throughout
- Satin finish single lever kitchen faucet with spray
- Extra large composite kitchen sink
- Concealed cabinet door hinges
- Matching woodgrain overhead cabinet interiors

BATHROOM

- Lasco fiberglass one piece tub/shower with liner and rod
- Satin finish single lever lavy faucet
- Satin finish single lever tub diverter with shower head
- Satin towel bar and tissue holder
- Safety mirror over lavy with 18" triple bulb satin light bar
- Lavy cabinet with drop-in cultured marble sink

BEDROOM

- Full width wardrobe with sliding doors
- Single drawers below wardrobe
- Dresser with overhead cabinet (per floorplan)
- 54" x 40" egress window

EXTERIOR

- "N" 3-window front bay
- 30-year architectural shingled roof
- Vertical "Smart Panel" exterior siding
- Rear door with window, internal mini blind and deadbolt
- Exterior lights at each door
- White low "E" vinyl framed dual glaze windows
- White aluminum framed dual glaze sliding glass door
- Front eave overhang
- Exterior GFI receptacle by sliding glass door

PLUMBING, ELECTRICAL, HEATING & INSULATION

- PEX waterlines with low point drain
- U.L. approved electrical devices throughout
- 50 amp exterior main panel service with 25' supply cord
- 20 gallon fast recovery electric water heater w/ exterior door
- Easy touch rocker light switches throughout
- 40,000 BTU propane furnace with auto ignition
- R-7 fiberglass floor insulation
- R-11 fiberglass sidewall insulation
- R-22 cellulose blown insulation
- Black iron gas pipe run to front hitch end
- Aluminum heat ducting with coordinated floor registers
- Under sink waterline shut-off valves
- Interior water heater switch on 20 gallon electric water heater
- Pre-wire for ceiling fan in living room and bedroom
- Pre-wire for TV and phone jacks in living room and bedroom

- Dimmer switch in dining room

CONSTRUCTION

- Full I-beam chassis construction
- Transverse 2" x 6" floor joists
- Detachable hitch from main chassis
- Woven simplex underbelly material
- 8' x 12' high density floor decking
- Full height 7'-6" sidewalls
- 2" x 4" sidewalls 16" O.C.
- Pre-engineered scissor trusses 16" O.C.
- Nominal 6/12 pitch roof
- 30 gauge steel strapping for truss to sidewall and floor to sidewall strength
- RPTIA approved
- ANSI approved
- NTA "GREEN" approved

POPULAR OPTIONS

- Spacesaver Microwave
- 100 Amp Electrical Service
- Bedroom Overhead Cabinet
- DVD Surround Sound System
- Mirrored Wardrobe Doors in Bedroom
- Toe Kick Registers
- Dining Room Bay Window

YOUR CAVCO RETAILER

